

CS-4510ES

Serial Number

38000001-38999999

Last updated date

22/Sep/2024

TABLE OF CONTENTS

CYLINDER, PISTON, CRANKSHAFT	1
ENGINE COVER.....	3
MAGNETO.....	5
AIR CLEANER, CARBURETOR.....	7
CARBURETOR.....	9
MUFFLER.....	11
RECOIL STARTER.....	13
HANDLE.....	15
CHAIN BRAKE.....	17
ACCESSORIES	19
GUIDE BAR, CHAIN	21
OPTION PARTS.....	23

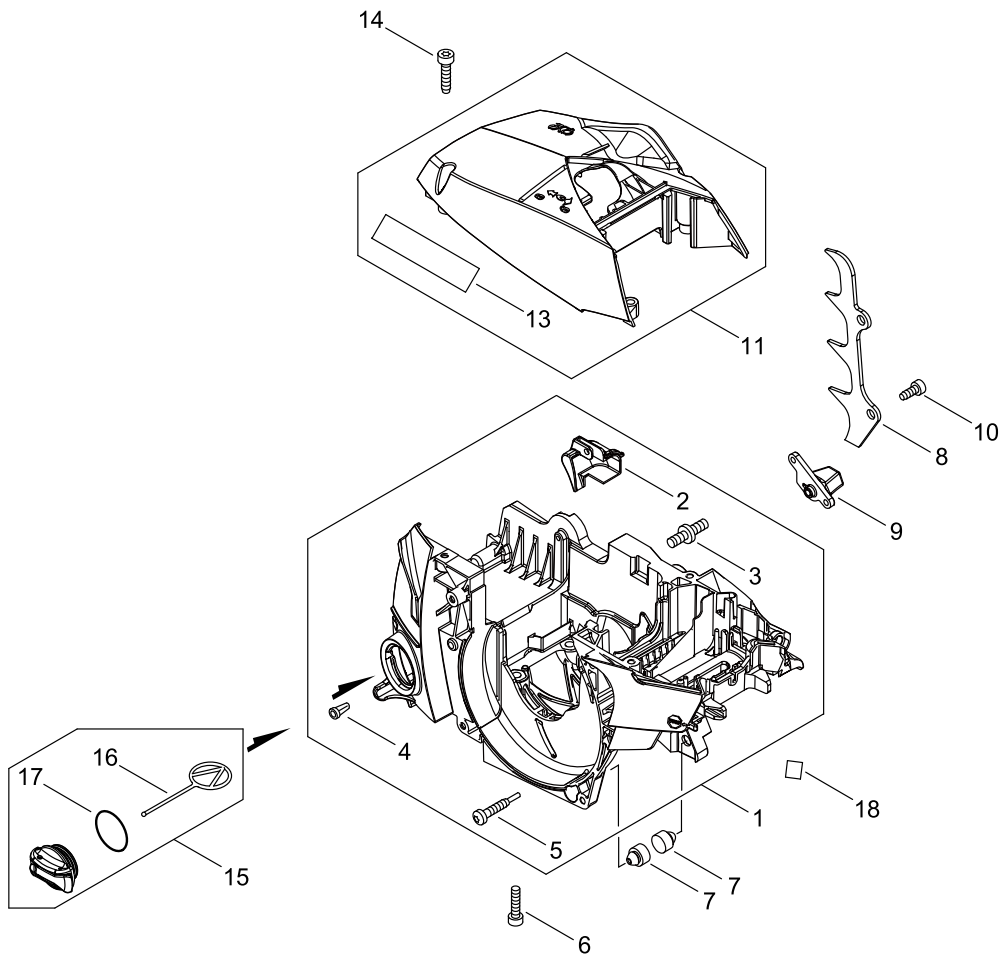
CYLINDER, PISTON, CRANKSHAFT

Key No.	LV (+)	Parts Number	Parts Description	Qty	Standard	Comment	CL
1		P100-004570	CRANKCASE SET	1			
2	+	V805-000250	BOLT, TORX 5	2	TB-5*16 12.9		C
3	+	P200-000890	SEAL SET	1			
4		P100-004580	PISTON KIT	1			
5	+	A101-000710	RING, PISTON	1	Φ43*1.5*1.8		B
6	+	100013-39730	PIN, PISTON	1			D
7	+	V580-000010	RING,END	2	10		C
8	+	V555-000140	BEARING,NEEDLE	1			B
9	+	100014-17330	SPACER, PISTON PIN	2			C
10		P100-004590	CRANKSHAFT ASY	1			
11	+	900810-36202	BEARING, BALL	2	6202		
12	+	V508-000110	SEAL,OIL 15	2			C
13		C022-000010	OILER,ASM AUTO	1			C
14		V805-000140	BOLT, TORX 5	2	TB-5*12 10.9		C
15		V652-000030	GEAR,WORM	1			B
16		V356-000390	COLLAR,10	1			C
17		V308-000030	WASHER,CIRCULAR 11	1	10.5*17.4*1.8		C
18		V471-005191	PIPE	1	3*6*49		C
19		V187-000010	NIPPLE	1			C
20		A203-000090	SEAL	1			C
21		V471-005201	PIPE	1	3*6*200		C
22		132115-01462	GROMMET	1			C
23		V490-001230	CLIP	1			C
24		C236-000160	COVER,OILER	1			D
25		V804-000000	BOLT, TORX 4	1	TT-4*12 DG 10.9		C
26		P100-001900	STRAINER, OIL	1			B

CL : Consumable class

A:Fast moving parts B:Semi-fast moving parts C:Slow moving parts D:Order only as needed

ENGINE COVER



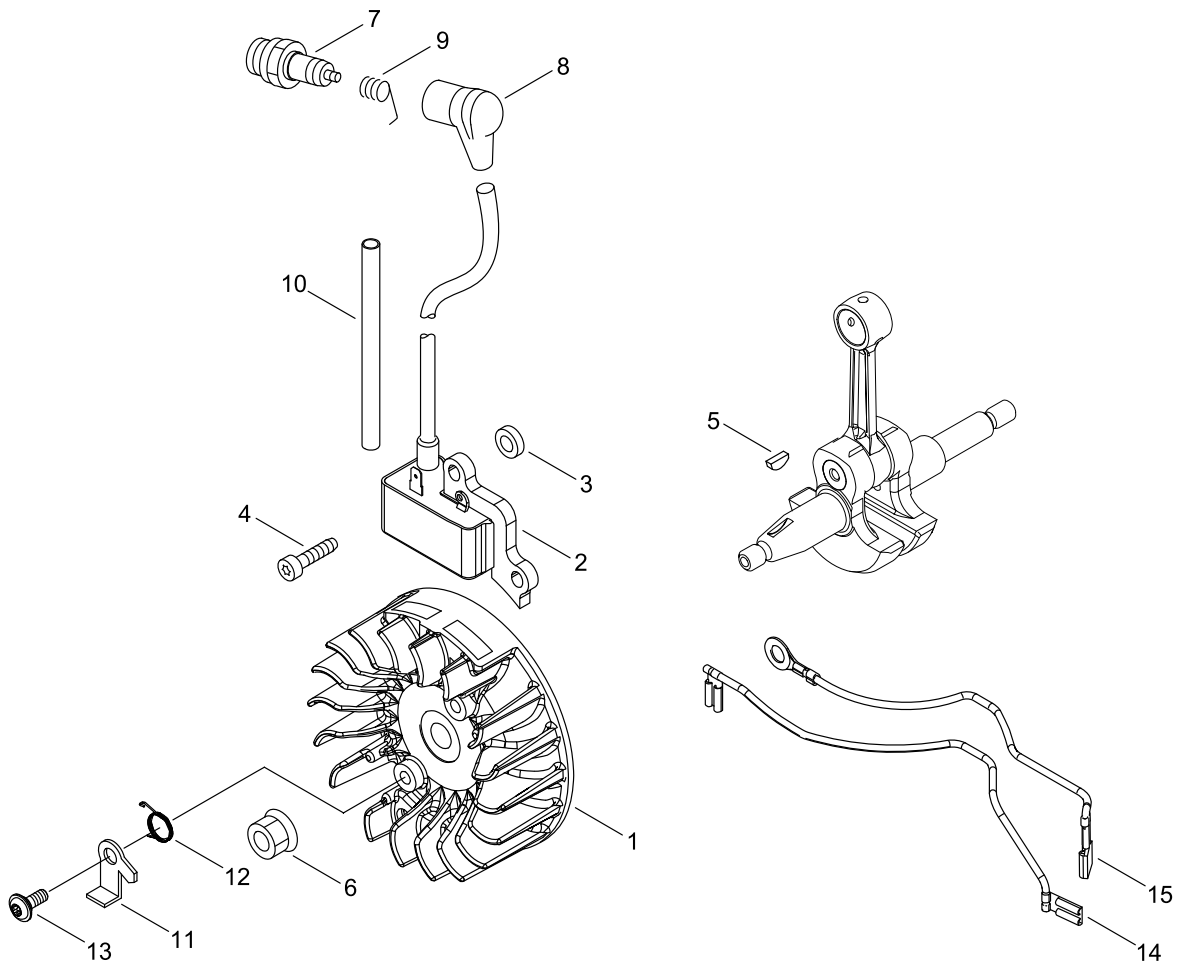
ENGINE COVER

Key No.	LV (+)	Parts Number	Parts Description	Qty	Standard	Comment	CL
1		P100-004602	COVER ENGINE ASY	1			C
2	+	A161-000370	DUCT, AIR	1			C
3	+	V225-000400	BOLT,STUD 8	2			
4	+	436114-13930	VALVE, CHECK	1			B
5	+	V203-002380	BOLT,5	1	STOPPER BOLT		C
6		V805-000270	BOLT, TORX 5	4	TB-5*40 12.9		C
7		V420-001790	CUSHION	2			B
8		C304-000330	SPIKED	1			C
9		C310-000150	CATCHER, CHAIN	1			B
10		V805-000010	BOLT, TORX 5	3	TT-5*20 DG 10.9		C
11		A160-003360	COVER,CYLINDER	1			C
13	+	X502-001060	LABEL,ECHO	1			D
14		V805-000010	BOLT, TORX 5	3	TT-5*20 DG 10.9		C
15		P100-004610	CAP,OIL ASY	1			C
16	+	A365-000050	CONNECTOR,CAP	1			B
17	+	900720-20029	O-RING	1	P-29		
18		X510-001050	LABEL,SWITCH	1			D

CL : Consumable class

A:Fast moving parts B:Semi-fast moving parts C:Slow moving parts D:Order only as needed

MAGNETO



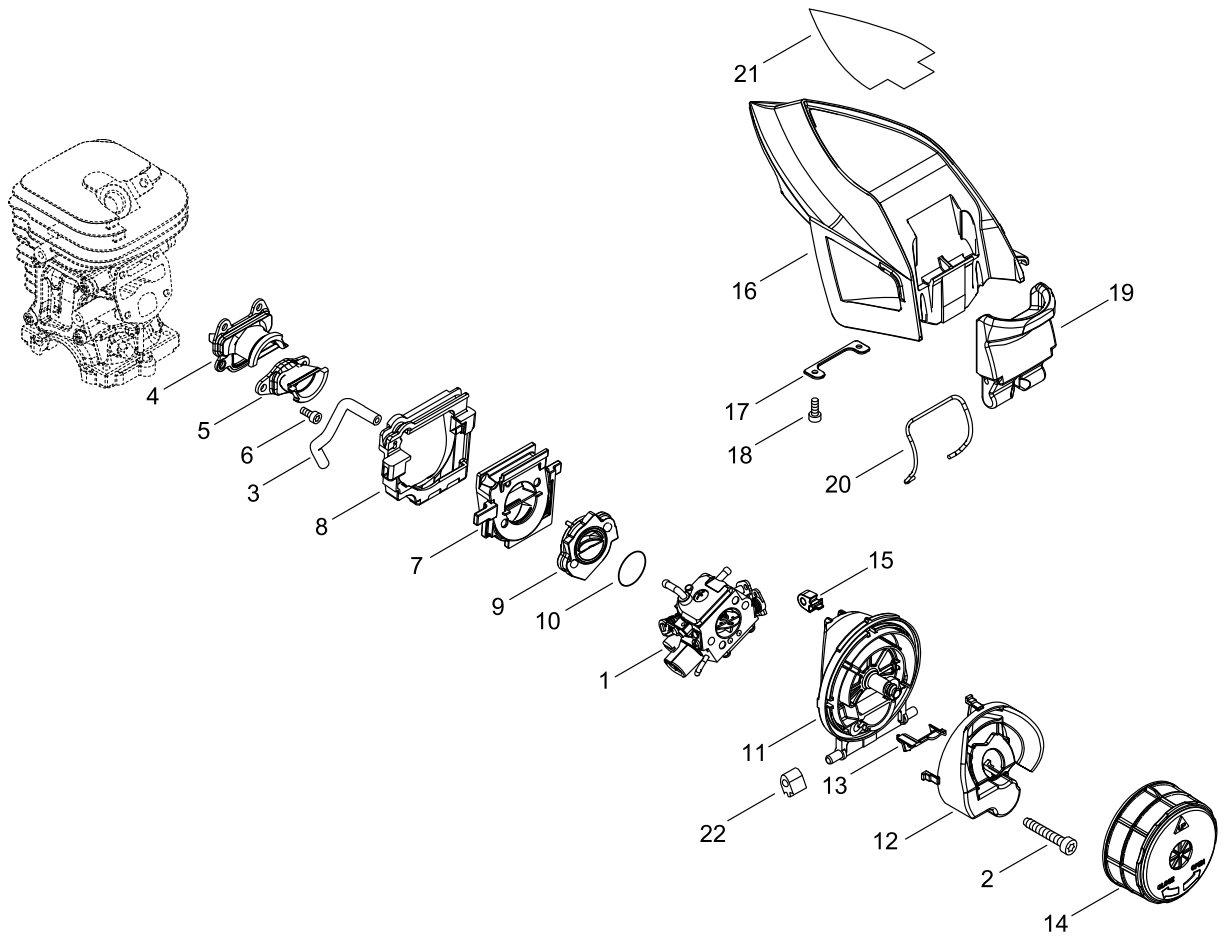
MAGNETO

Key No.	LV (+)	Parts Number	Parts Description	Qty	Standard	Comment	CL
1		A409-001330	ROTOR, MAGNETO	1	ID#*****		C
2		A411-001740	COIL, IGNITION	1	ID#*****		C
3		150117-16430	SPACER	2			C
4		V805-000210	BOLT, TORX 5	2	TB-5*20 12.9		C
5		100142-12330	KEY, WOODRUFF	1			C
6		900515-00008	NUT, FLANGE	1	8		
7		A425-000000	SPARKPLUG	1	BPMR8Y		A
8		A427-000190	CAP,SPARK PLUG	1			C
9		A426-000010	TERMINAL, SPARKPLUG	1			C
10		V475-009180	TUBE	1	SSG-1 6*7.2*100		C
11		A514-000050	PAWL	2			C
12		177234-35430	SPRING, RETURN	2			B
13		V203-002250	BOLT,5	2			C
14		V485-002960	LEAD	1	L155		C
15		V485-002970	LEAD	1	L153		C

CL : Consumable class

A:Fast moving parts B:Semi-fast moving parts C:Slow moving parts D:Order only as needed

AIR CLEANER, CARBURETOR



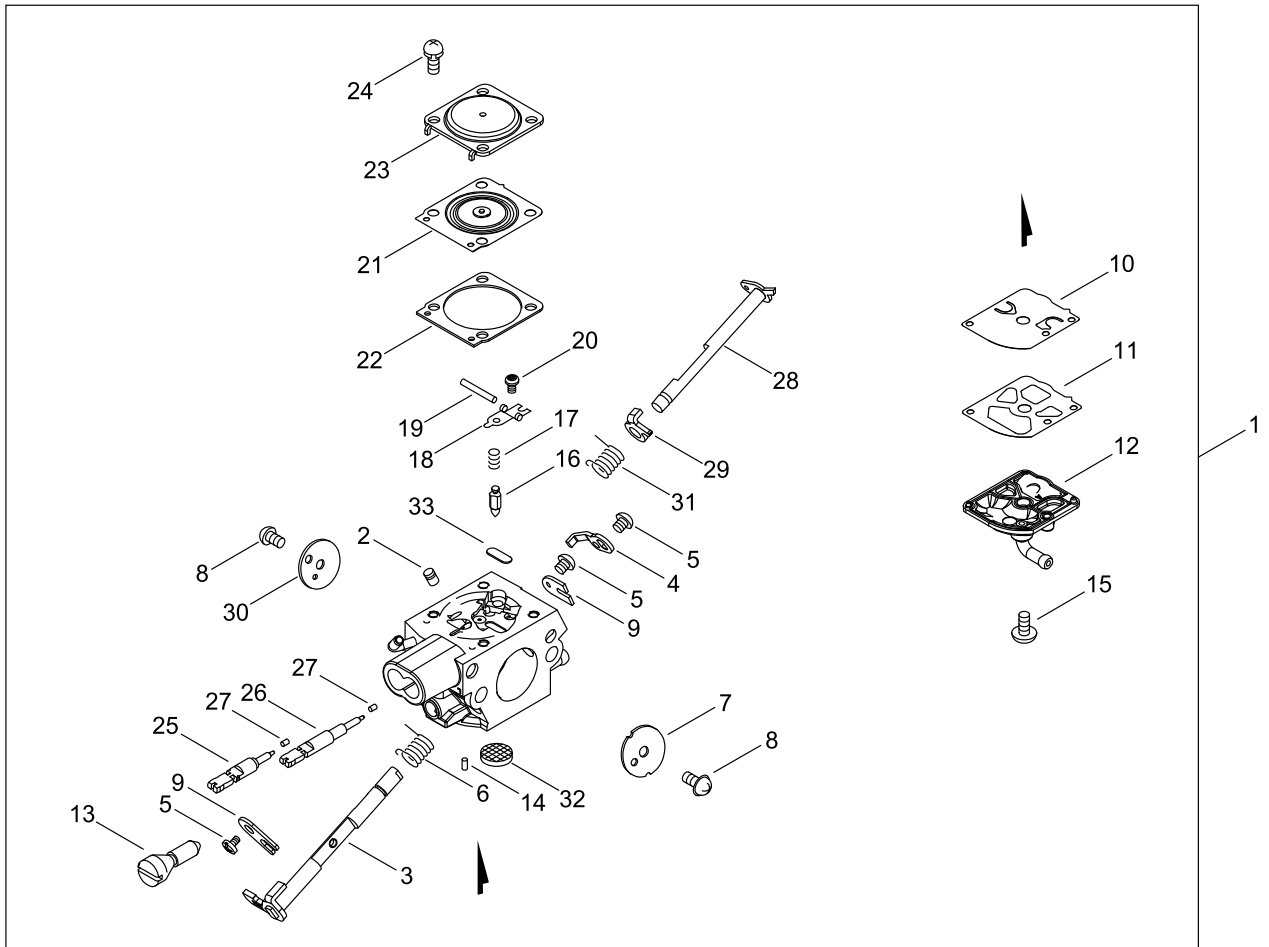
AIR CLEANER, CARBURETOR

Key No.	LV (+)	Parts Number	Parts Description	Qty	Standard	Comment	CL
1		A021-004811	CARBURETOR, DIAPHRAGM	1	IDYZ0007		B
2		V805-000040	BOLT, TORX 5	2	TT-5*55 DG 10.9		C
3		V471-000761	PIPE	1	3*6*90		C
4		A202-000310	BELLOWS, INTAKE	1	AIR SIDE		C
5		A202-000320	BELLOWS, INTAKE	1	MIX SIDE		C
6		V804-000050	BOLT, TORX 4	4	TB-4*12 10.9		C
7		A200-001150	INSULATOR, INTAKE	1	CYLINDER SIDE		C
8		V420-005250	CUSHION	1	FOR IN- INSULATOR		B
9		A200-001160	INSULATOR, INTAKE	1	CARB SIDE		C
10		900724-00022	O-RING	1	S-22		
11		A225-000730	CASE,CLEANER	1			C
12		A161-000350	DUCT, AIR	1	BIG		C
13		A161-000360	DUCT, AIR	1	SMALL		C
14		A226-002150	ELEMENT, AIR FILTER	1			A
15		V420-005260	CUSHION	1	FOR CLEANERCASE		B
16		A232-001940	LID,CLEANER	1			C
17		V453-000260	SPRING,FLAT	1	T1.5 1/2H		C
18		V804-000000	BOLT, TORX 4	2	TT-4*12 DG 10.9		C
19		A235-000440	KNOB,CLEANER LID	1			C
20		V582-000280	RING,SNAP	1	O.D. 2		C
21		X503-014630	LABEL,MODEL	1	CS-4510ES		D
22		V420-005260	CUSHION	2	FOR CLEANERCASE		B

CL : Consumable class

A:Fast moving parts B:Semi-fast moving parts C:Slow moving parts D:Order only as needed

CARBURETOR



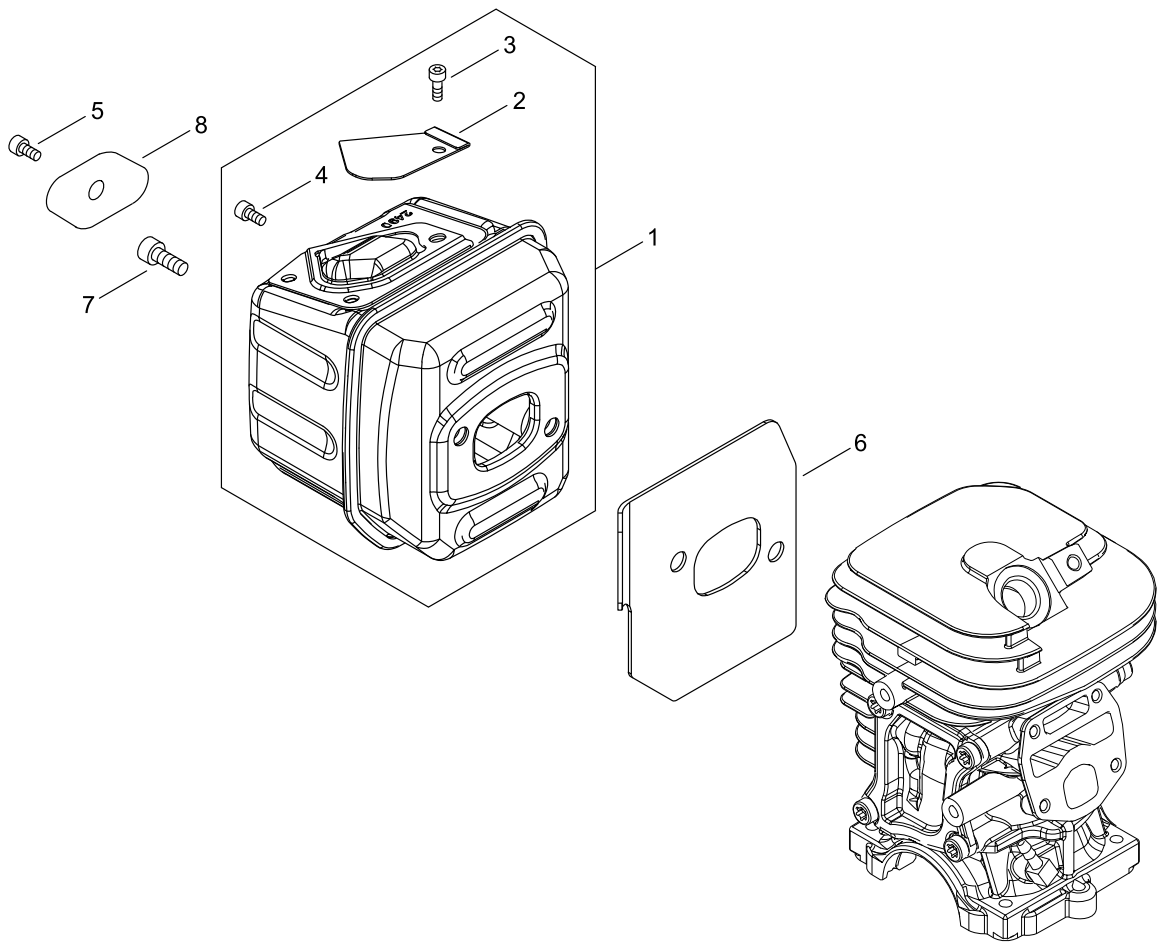
CARBURETOR

Key No.	LV (+)	Parts Number	Parts Description	Qty	Standard	Comment	CL
1		A021-004811	CARBURETOR, DIAPHRAGM	1	IDYZ0007		B
2	+	P005-004060	NOZZLE, CHECK VALVE	1			
3	+	P005-004070	SHAFT ASY, THROTTLE	1			
4	+	P005-004080	LEVER, THROTTLE	1			
5	+	125348-13930	SCREW	3			D
6	+	P005-004090	SPRING, RETURN	1			
7	+	P005-004100	VALVE, THROTTLE	1			D
8	+	125314-51230	SCREW	2	3*4.5		D
9	+	P005-003820	RETAINER, SHAFT	2			D
10	+	P005-001110	DIAPHRAGM, PUMP	1			A
11	+	125325-08360	GASKET, PUMP	1			
12	+	P005-004110	COVER, PUMP	1			
13	+	P005-004120	SCREW, THROTTLEADJUST	1			
14	+	125378-13930	PIECE, FRICTION	1			D
15	+	125310-13930	SCREW	1			D
16	+	P005-004030	VALVE, INLET NEEDLE	1			D
17	+	125322-13930	SPRING, COIL	1			
18	+	125323-08260	ARM, VALVE	1			
19	+	125338-13930	PIN, METERING ARM	1			D
20	+	P005-004130	SCREW	1			D
21	+	P005-004300	METERING, DIAPHRAGM	1			A
22	+	P005-003200	GASKET, METERING	1			A
23	+	P005-003210	COVER, METERING	1			D
24	+	P005-003840	SCREW	4			
25	+	P005-004290	NEEDLE	1			D
26	+	P005-004170	SCREW, IDLE MIXTURE	1			
27	+	125363-12820	RETAINER	2			D
28	+	P005-004180	SHAFT, CHOKE ASY	1			
29	+	P005-004190	LEVER, CHOKE	1			
30	+	P005-004200	VALVE, CHOKE	1			D
31	+	P005-004210	SPRING, RETURN	1			
32	+	P005-000860	SCREEN, FUEL INLET	1			B
33	+	P005-000410	PLUG, WELCH	1			D

CL : Consumable class

A:Fast moving parts B:Semi-fast moving parts C:Slow moving parts D:Order only as needed

MUFFLER



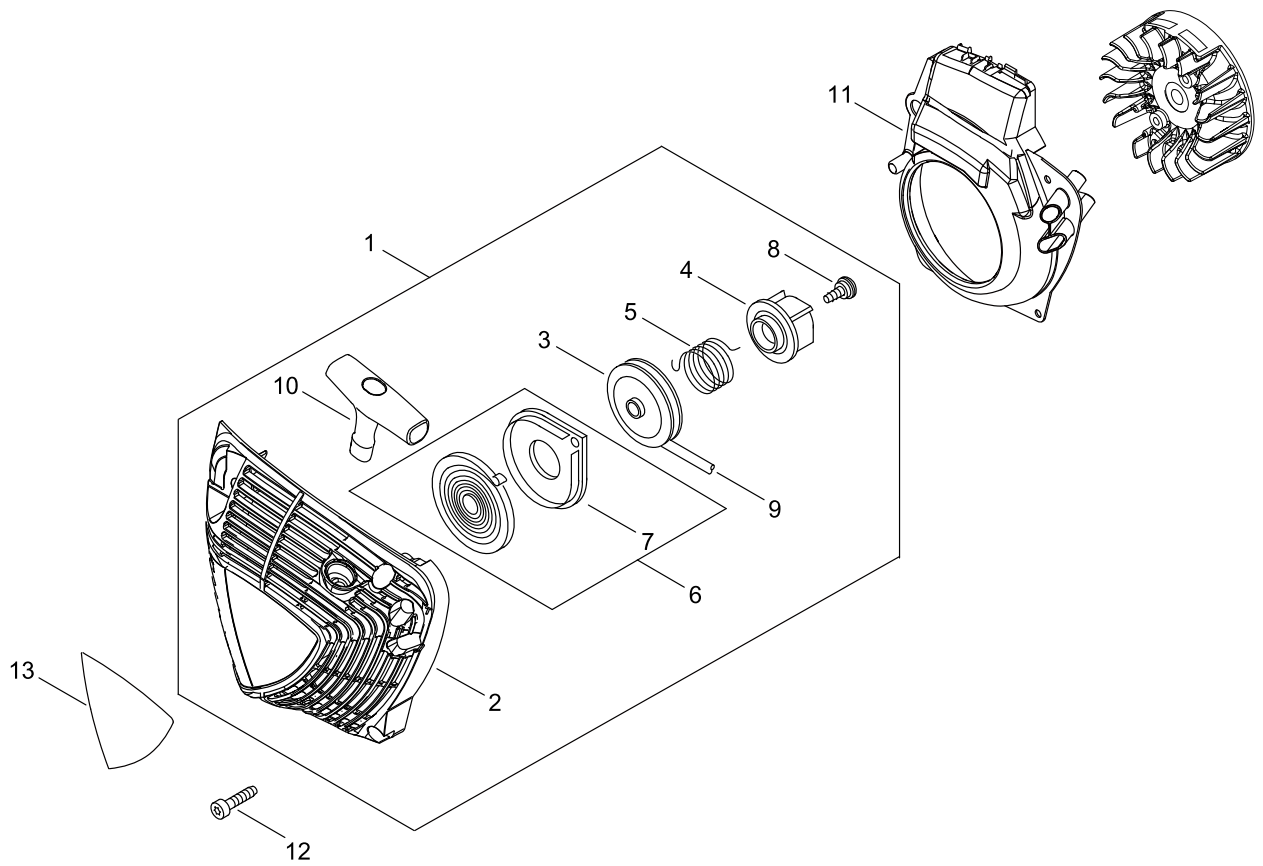
MUFFLER

Key No.	LV (+)	Parts Number	Parts Description	Qty	Standard	Comment	C L
1		P100-004620	MUFFLER ASY	1			
2	+	A310-000500	SCREEN, ARRESTOR	1			B
3	+	V804-000030	BOLT, TORX 4	1	TB-4*8 10.9		C
4	+	V804-000030	BOLT, TORX 4	1	TB-4*8 10.9		C
5		V804-000030	BOLT, TORX 4	1	TB-4*8 10.9		C
6		V104-002340	GASKET, EXHAUST	1	T:1.0		A
7		V805-000250	BOLT, TORX 5	2	TB-5*16 12.9		C
8		145711-60631	STAY, MUFFLER	1			C

CL : Consumable class

A:Fast moving parts B:Semi-fast moving parts C:Slow moving parts D:Order only as needed

RECOIL STARTER



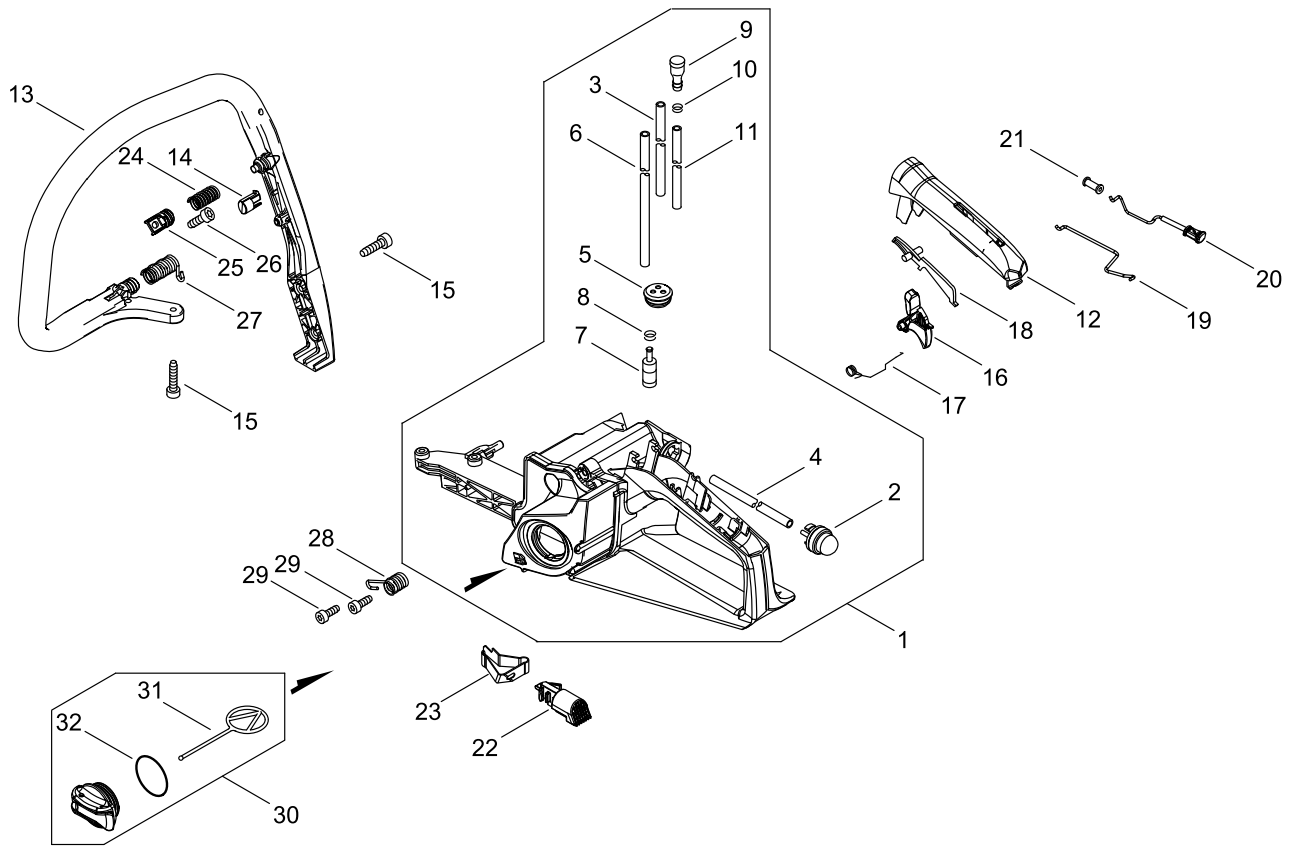
RECOIL STARTER

Key No.	LV (+)	Parts Number	Parts Description	Qty	Standard	Comment	C L
1		A051-003300	STARTER,RECOIL ASY	1	SI		B
2	+	P022-050400	STARTER CASE	1			
3	+	P022-050410	DRUM, STARTER	1			
4	+	P022-050430	PLATE, CAM	1			
5	+	P022-050420	SPRING,DAMPER	1			
6	+	P022-001330	SPRING KIT, REWIND	1			B
7	++	P022-033280	SPRING CASE	1			C
8	+	177236-61830	SCREW	1			
9	+	P022-050440	ROPE, STARTER	1			
10	+	P022-050450	GRIP, STARTER	1			
11		A172-003290	COVER,FAN	1			C
12		V805-000010	BOLT, TORX 5	3	TT-5*20 DG 10.9		C
13		X503-014430	LABEL,MODEL	1	CS-4510ES		D

CL : Consumable class

A:Fast moving parts B:Semi-fast moving parts C:Slow moving parts D:Order only as needed

HANDLE



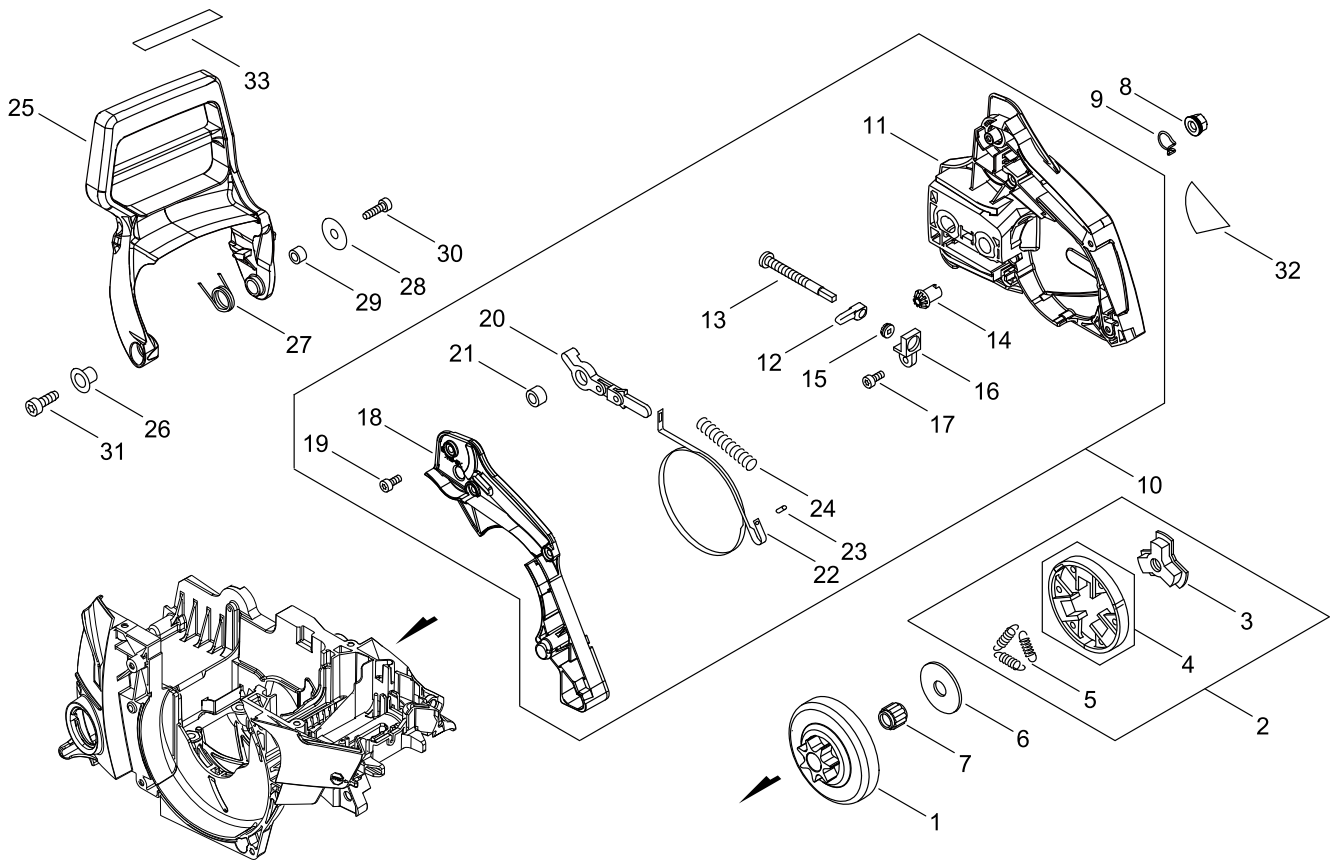
HANDLE

Key No.	LV (+)	Parts Number	Parts Description	Qty	Standard	Comment	CL
1		P100-004634	REAR HANDLE ASY	1			
2	+	123181-39130	PUMP, PRIMER	1			A
3	+	V471-001291	PIPE	1	2.4*5*75		C
4	+	V471-005211	PIPE	1	2.4*5*165		C
5	+	132115-55931	GROMMET, FUEL	1	3 φ5		C
6	+	V471-005181	PIPE	1	3*5*300		C
7	+	A369-000420	STRAINER, FUEL	1	ES-16499		A
8	+	V490-001240	CLIP	1			C
9	+	131300-56431	VENT ASSEMBLY, FUEL	1			B
10	+	V490-001230	CLIP	1			C
11	+	V471-005191	PIPE	1	3*6*49		C
12		C411-000230	LID,HANDLE	1			C
13		C400-001630	HANDLE, FRONT	1	GAI		C
14		V420-005270	CUSHION	1	FOR FRONT HANDLE		B
15		V805-000010	BOLT, TORX 5	4	TT-5*20 DG 10.9		C
16		C450-001041	CONTROL, THROTTLE	1			C
17		V452-000260	SPRING,TORSION	1			B
18		178090-37930	LOCKOUT, T. CONTROL	1			C
19		C454-000570	ROD, THROTTLE	1			C
20		A241-000370	KNOB, CHOKE	1			C
21		178810-14535	GROMMET	1			C
22		A444-000120	KNOB, SWITCH	1			C
23		V486-000540	TERMINAL,LEAD	1			C
24		V450-002200	SPRING, COMPRESSION	1	CENTER		B
25		V456-000240	HOLDER,SPRING	1			C
26		V805-000140	BOLT, TORX 5	1	TB-5*12 10.9		C
27		V450-002180	SPRING, COMPRESSION	1	FRONT		B
28		V450-002190	SPRING, COMPRESSION	1	REAR TYPE2-A		B
29		V805-000240	BOLT, TORX 5	2	TT-5*12 DG 10.9		C
30		P100-004640	CAP,FUEL ASY	1			
31	+	A365-000050	CONNECTOR,CAP	1			B
32	+	900720-20029	O-RING	1	P-29		

CL : Consumable class

A:Fast moving parts B:Semi-fast moving parts C:Slow moving parts D:Order only as needed

CHAIN BRAKE



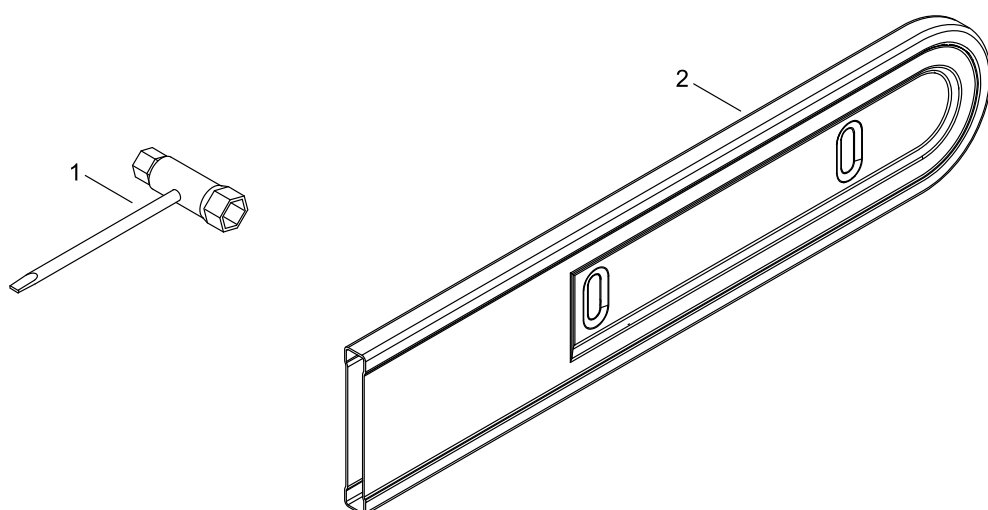
CHAIN BRAKE

Key No.	LV (+)	Parts Number	Parts Description	Qty	Standard	Comment	CL
1		A556-000481	DRUM, CLUTCH	1			B
2		A056-000840	CLUTCH ASY	1			B
3	+	A552-000470	HUB, CLUTCH	1			B
4	+	P021-007051	CLUTCH SHOE SET	1			B
5	+	V451-000500	SPRING,TENSION	3			B
6		175019-39430	PLATE, CLUTCH	1			C
7		V555-000170	BEARING,NEEDLE 10	1	8E- KV10*13*12.8		B
8		V265-000550	NUT,8	2			C
9		C649-000420	HOOK	2			D
10		P100-004652	GUARD, SPROCKET ASY	1			
11	+	C300-001161	GUARD, SPROCKET	1			C
12	+	C309-000070	TENSIONER, CHAIN	1			C
13	+	V203-000110	BOLT,5	1			C
14	+	V651-001040	GEAR,BEVEL	1			D
15	+	V651-001050	GEAR,BEVEL	1			D
16	+	V355-000140	COLLAR,8	1			C
17	+	V804-000010	BOLT, TORX 4	1	TT-4*16 DG 10.9		C
18	+	C345-000651	COVER,BRAKE	1			C
19	+	V804-000010	BOLT, TORX 4	4	TT-4*16 DG 10.9		C
20	+	C334-000100	CONNECTOR, BRAKE	1			C
21	+	433116-35430	SPACER 8	1	8*12*9		C
22	+	C328-000110	BAND, BRAKE	1			C
23	+	900330-30120	ROLLER	1	3*11.8		
24	+	V450-000070	SPRING, COMPRESSION	1			B
25		C320-000530	LEVER, BRAKE	1			C
26		V356-000430	COLLAR,10	1			C
27		V452-001281	SPRING,TORSION	1			B
28		177214-03930	WASHER	1			C
29		433116-35430	SPACER 8	1	8*12*9		C
30		V804-000010	BOLT, TORX 4	1	TT-4*16 DG 10.9		C
31		V805-000010	BOLT, TORX 5	1	TT-5*20 DG 10.9		C
32		X502-001050	LABEL,ECHO	1	D SIDE		D
33		X505-010150	LABEL,CAUTION	1	CE CAUTION		D

CL : Consumable class

A:Fast moving parts B:Semi-fast moving parts C:Slow moving parts D:Order only as needed

ACCESSORIES





ACCESSORIES

Key No.	LV (+)	Parts Number	Parts Description	Qty	Standard	Comment	C L
1		X602-000080	TOOL,WRENCH	1	13*19 L180		D
2		X490-000490	SCABBARD,CHAIN	1			D

CL : Consumable class

A:Fast moving parts B:Semi-fast moving parts C:Slow moving parts D:Order only as needed

GUIDE BAR, CHAIN

Pitch ピッチ (inch) (mm)	Gauge ゲージ (inch) (mm)	Length 長さ (cm)	Guide Bar ガイドバー		Saw Chain ソーチェーン		Hard Nose ハード ノーズ 	Sprocket Nose スプロケット ノーズ 
			Key №	Type 形式	Key №	Type 形式		
.325 8.26	0.058 1.47	33	A1	Y33S21-56ML- ED	A2	21BPX-56E		●
.325 8.26	0.058 1.47	38	B1	Y38S21-64ML- ED	B2	21BPX-64E		●
.325 8.26	0.058 1.47	45	C1	Y45S21-72ML- ED	C2	21BPX-72E		●
.325 8.26	0.050 1.27	38	D1	Y38S20-64ML- ED	D2	95TXL-64E		●
.325 8.26	0.050 1.27	45	E1	Y45S20-72ML- ED	E2	95TXL-72E		●

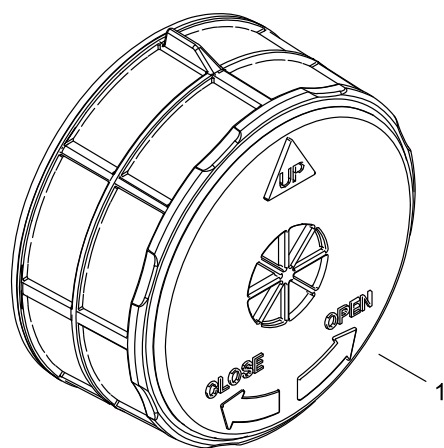
GUIDE BAR, CHAIN

Key No.	LV (+)	Parts Number	Parts Description	Qty	Standard	Comment	CL
A1		X122-000390	BAR,GUIDE 33	1	Y33S21-56ML-ED		A
A2		431713-30231	CHAIN, SAW 21BPX-56E	1	21BPX-56E		A
B1		X123-000620	BAR,GUIDE 38	1	Y38S21-64ML-ED		A
B2		431721-30231	CHAIN, SAW	1	21BPX-64E		A
C1		X125-000390	BAR,GUIDE 45	1	Y45S21-72ML-ED		A
C2		431717-30231	CHAIN, SAW	1	21BPX-72E		A
D1		X123-000670	BAR,GUIDE 38	1	Y38S20-64ML-ED		A
D2		X243-000020	CHAIN,SAW	1	95TXL-64E		A
E1		X125-000440	BAR,GUIDE 45	1	Y45S20-72ML-ED		A
E2		X245-000060	CHAIN,SAW	1	95TXL-72E		A

CL : Consumable class

A:Fast moving parts B:Semi-fast moving parts C:Slow moving parts D:Order only as needed

OPTION PARTS



OPTION PARTS

Key No.	LV (+)	Parts Number	Parts Description	Qty	Standard	Comment	CL
1		A226-002190	ELEMENT, AIR FILTER	1	OUT/IN:#300/ #80		A

CL : Consumable class

A:Fast moving parts B:Semi-fast moving parts C:Slow moving parts D:Order only as needed

NUMERICAL PARTS INDEX

Part No	Part description	Page	Part No	Part description	Page	Part No	Part description	Page
100013-39730	PIN, PISTON	2	A172-003290	COVER,FAN	14	P005-003820	RETAINER, SHAFT	10
100014-17330	SPACER, PISTON PIN	2	A200-001150	INSULATOR, INTAKE	8	P005-003840	SCREW	10
100142-12330	KEY, WOODRUFF	6	A200-001160	INSULATOR, INTAKE	8	P005-004030	VALVE, INLET NEEDLE	10
123181-39130	PUMP, PRIMER	16	A202-000310	BELLOWS, INTAKE	8	P005-004060	NOZZLE, CHECK VALVE	10
125310-13930	SCREW	10	A202-000320	BELLOWS, INTAKE	8	P005-004070	SHAFT ASY,THROTTLE	10
125314-51230	SCREW	10	A203-000090	SEAL	2	P005-004080	LEVER, THROTTLE	10
125322-13930	SPRING, COIL	10	A225-000730	CASE,CLEANER	8	P005-004090	SPRING, RETURN	10
125323-08260	ARM, VALVE	10	A226-002150	ELEMENT, AIR FILTER	8	P005-004100	VALVE, THROTTLE	10
125325-08360	GASKET, PUMP	10	A226-002190	ELEMENT, AIR FILTER	24	P005-004110	COVER, PUMP	10
125338-13930	PIN, METERING ARM	10	A232-001940	LID,CLEANER	8	P005-004120	SCREW, THROTTLEADJUST	10
125348-13930	SCREW	10	A235-000440	KNOB,CLEANER LID	8	P005-004130	SCREW	10
125363-12820	RETAINER	10	A241-000370	KNOB, CHOKE	16	P005-004170	SCREW,IDLE MIXTURE	10
125378-13930	PIECE, FRICTION	10	A310-000500	SCREEN, ARRESTOR	12	P005-004180	SHAFT, CHOKE ASY	10
131300-56431	VENT ASSEMBLY, FUEL	16	A365-000050	CONNECTOR,CAP	4	P005-004190	LEVER, CHOKE	10
132115-01462	GROMMET	2	A365-000050	CONNECTOR,CAP	16	P005-004200	VALVE, CHOKE	10
132115-55931	GROMMET, FUEL	16	A369-000420	STRAINER, FUEL	16	P005-004210	SPRING, RETURN	10
145711-60631	STAY, MUFFLER	12	A409-001330	ROTOR, MAGNETO	6	P005-004290	NEEDLE	10
150117-16430	SPACER	6	A411-001740	COIL, IGNITION	6	P005-004300	METERING, DIAPHRAGM	10
175019-39430	PLATE, CLUTCH	18	A425-000000	SPARKPLUG	6	P021-007051	CLUTCH SHOE SET	18
177214-03930	WASHER	18	A426-000010	TERMINAL,SPARKPLUG	6	P022-001330	SPRING KIT, REWIND	14
177234-35430	SPRING, RETURN	6	A427-000190	CAP,SPARK PLUG	6	P022-033280	SPRING CASE	14
177236-61830	SCREW	14	A444-000120	KNOB, SWITCH	16	P022-050400	STARTER CASE	14
178090-37930	LOCKOUT, T. CONTROL	16	A514-000050	PAWL	6	P022-050410	DRUM, STARTER	14
178810-14535	GROMMET	16	A552-000470	HUB, CLUTCH	18	P022-050420	SPRING,DAMPER	14
431713-30231	CHAIN, SAW 21BPX-56E	22	A556-000481	DRUM, CLUTCH	18	P022-050430	PLATE, CAM	14
431717-30231	CHAIN, SAW	22	C022-000010	OILER,ASM AUTO	2	P022-050440	ROPE, STARTER	14
431721-30231	CHAIN, SAW	22	C236-000160	COVER,OILER	2	P022-050450	GRIP, STARTER	14
433116-35430	SPACER 8	18	C300-001161	GUARD, SPROCKET	18	P100-001900	STRAINER, OIL	2
436114-13930	VALVE, CHECK	4	C304-000330	SPIKED	4	P100-004570	CRANKCASE SET	2
900330-30120	ROLLER	18	C309-000070	TENSIONER, CHAIN	18	P100-004580	PISTON KIT	2
900515-00008	NUT, FLANGE	6	C310-000150	CATCHER, CHAIN	4	P100-004590	CRANKSHAFT ASY	2
900720-20029	O-RING	4	C320-000530	LEVER, BRAKE	18	P100-004602	COVER ENGINE ASY	4
900720-20029	O-RING	16	C328-000110	BAND, BRAKE	18	P100-004610	CAP,OIL ASY	4
900724-00022	O-RING	8	C334-000100	CONNECTOR, BRAKE	18	P100-004620	MUFFLER ASY	12
900810-36202	BEARING, BALL	2	C345-000651	COVER,BRAKE	18	P100-004634	REAR HANDLE ASY	16
A021-004811	CARBURETOR, DIAPHRAGM	8	C400-001630	HANDLE, FRONT	16	P100-004640	CAP,FUEL ASY	16
A021-004811	CARBURETOR, DIAPHRAGM	10	C411-000230	LID,HANDLE	16	P100-004652	GUARD, SPROCKET ASY	18
A051-003300	STARTER,RECOIL ASY	14	C450-001041	CONTROL, THROTTLE	16	P200-000890	SEAL SET	2
A056-000840	CLUTCH ASY	18	C454-000570	ROD, THROTTLE	16	V104-002340	GASKET,EXHAUST	12
A101-000710	RING, PISTON	2	C649-000420	HOOK	18	V187-000010	NIPPLE	2
A160-003360	COVER,CYLINDER	4	P005-000410	PLUG, WELCH	10	V203-000110	BOLT,5	18
A161-000350	DUCT, AIR	8	P005-000860	SCREEN, FUEL INLET	10	V203-002250	BOLT,5	6
A161-000360	DUCT, AIR	8	P005-001110	DIAPHRAGM, PUMP	10	V203-002380	BOLT,5	4
A161-000360	DUCT, AIR	8	P005-003200	GASKET, METERING	10	V225-000400	BOLT,STUD 8	4
A161-000370	DUCT, AIR	4	P005-003210	COVER, METERING	10			

NUMERICAL PARTS INDEX

Part No	Part description	Page	Part No	Part description	Page
V265-000550	NUT,8	18	V805-000010	BOLT, TORX 5	4
V308-000030	WASHER,CIRCULAR 11	2	V805-000010	BOLT, TORX 5	14
V355-000140	COLLAR,8	18	V805-000010	BOLT, TORX 5	16
V356-000390	COLLAR,10	2	V805-000010	BOLT, TORX 5	18
V356-000430	COLLAR,10	18	V805-000040	BOLT, TORX 5	8
V420-001790	CUSHION	4	V805-000140	BOLT, TORX 5	2
V420-005250	CUSHION	8	V805-000140	BOLT, TORX 5	16
V420-005260	CUSHION	8	V805-000210	BOLT, TORX 5	6
V420-005270	CUSHION	16	V805-000240	BOLT, TORX 5	16
V450-000070	SPRING,COMPRESSION	18	V805-000250	BOLT, TORX 5	2
V450-002180	SPRING,COMPRESSION	16	V805-000250	BOLT, TORX 5	12
V450-002190	SPRING,COMPRESSION	16	V805-000270	BOLT, TORX 5	4
V450-002200	SPRING,COMPRESSION	16	X122-000390	BAR,GUIDE 33	22
V451-000500	SPRING,TENSION	18	X123-000620	BAR,GUIDE 38	22
V452-000260	SPRING,TORSION	16	X123-000670	BAR,GUIDE 38	22
V452-001281	SPRING,TORSION	18	X125-000390	BAR,GUIDE 45	22
V453-000260	SPRING,FLAT	8	X125-000440	BAR,GUIDE 45	22
V456-000240	HOLDER,SPRING	16	X243-000020	CHAIN,SAW	22
V471-000761	PIPE	8	X245-000060	CHAIN,SAW	22
V471-001291	PIPE	16	X490-000490	SCABBARD,CHAIN	20
V471-005181	PIPE	16	X502-001050	LABEL,ECHO	18
V471-005191	PIPE	2	X502-001060	LABEL,ECHO	4
V471-005191	PIPE	16	X503-014430	LABEL,MODEL	14
V471-005201	PIPE	2	X503-014630	LABEL,MODEL	8
V471-005211	PIPE	16	X505-010150	LABEL,CAUTION	18
V475-009180	TUBE	6	X510-001050	LABEL,SWITCH	4
V485-002960	LEAD	6	X602-000080	TOOL,WRENCH	20
V485-002970	LEAD	6			
V486-000540	TERMINAL,LEAD	16			
V490-001230	CLIP	2			
V490-001230	CLIP	16			
V490-001240	CLIP	16			
V508-000110	SEAL,OIL 15	2			
V555-000140	BEARING,NEEDLE	2			
V555-000170	BEARING,NEEDLE 10	18			
V580-000010	RING,END	2			
V582-000280	RING,SNAP	8			
V651-001040	GEAR,BEVEL	18			
V651-001050	GEAR,BEVEL	18			
V652-000030	GEAR,WORM	2			
V804-000000	BOLT, TORX 4	2			
V804-000000	BOLT, TORX 4	8			
V804-000010	BOLT, TORX 4	18			
V804-000030	BOLT, TORX 4	12			
V804-000050	BOLT, TORX 4	8			