

SRM-222ES/L

Serial Number

38007978-38999999

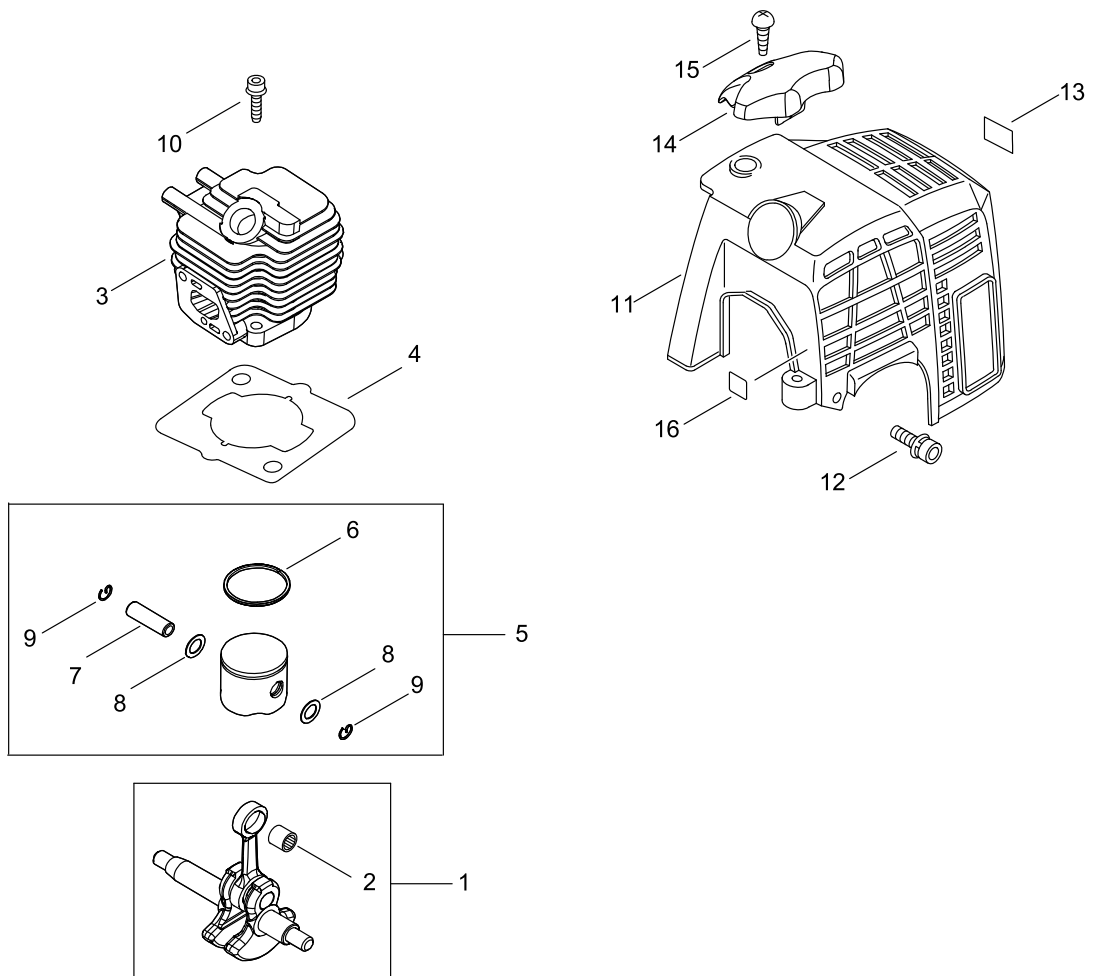
Last updated date

16/Mar/2023

TABLE OF CONTENTS

CYLINDER, PISTON, CRANKSHAFT	1
CRANKCASE	3
MAGNETO.....	5
CLUTCH.....	7
AIR CLEANER, CARBURETOR.....	9
CARBURETOR.....	11
FUEL TANK	15
MUFFLER.....	17
RECOIL STARTER, PULLY	19
GEAR CASE, SHIELD	21
MAIN PIPE, HANDLE.....	23
THROTTLE.....	25
ACCESSORIES	27
NYLON LINE CUTTER	29

CYLINDER, PISTON, CRANKSHAFT



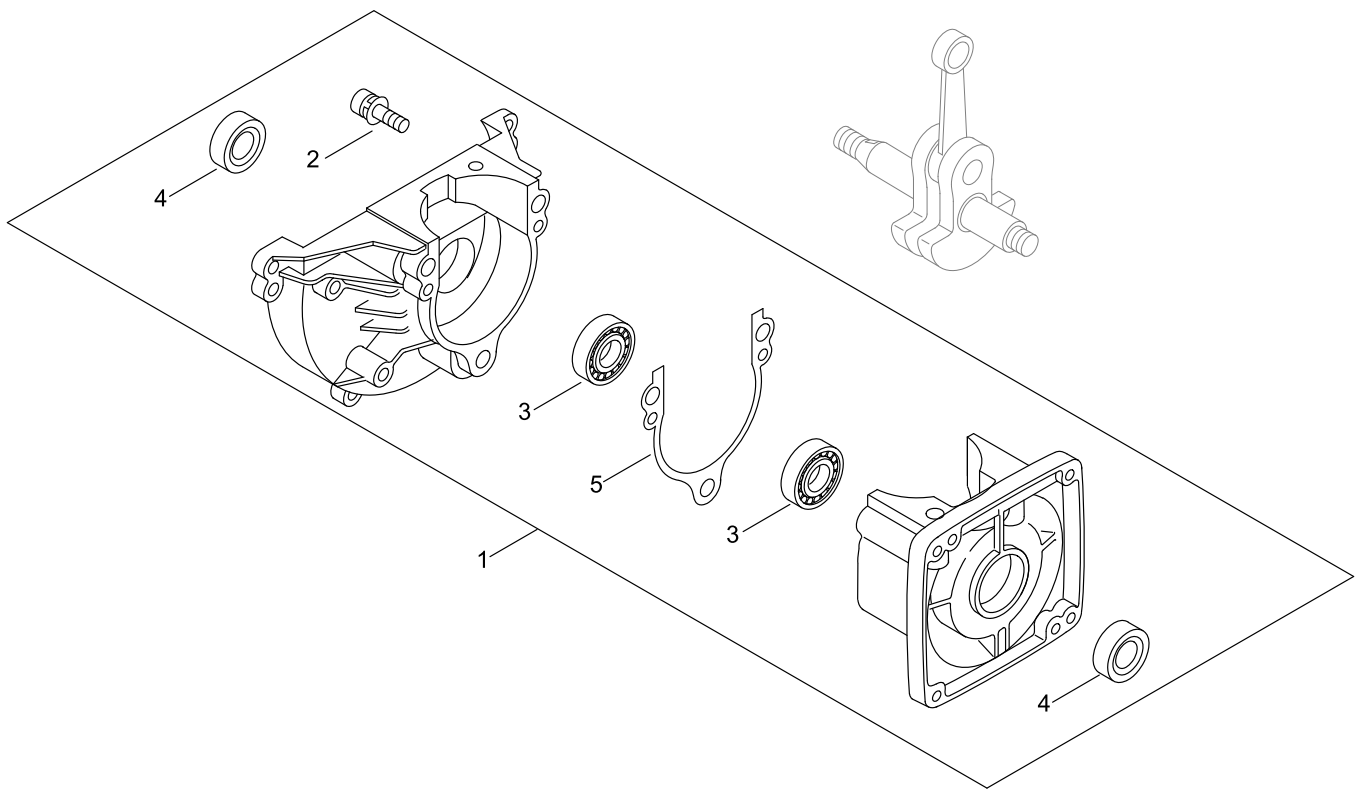
CYLINDER, PISTON, CRANKSHAFT

Key No.	LV (+)	Parts Number	Parts Description	Qty	Standard	Class
1		A011-001410	CRANKSHAFT,ASY	1		D
2	+	V553-000060	BEARING,NEEDLE 8	1	HK0810FMV4	B
3		A130-002100	CYLINDER	1		D
4		101010-44332	GASKET, CYL. BASE	1		B
5		P021-007712	PISTON KIT	1		C
6	+	A101-000090	RING,PISTON	1		B
7	+	100013-11520	PIN, PISTON	1		D
8	+	100014-11520	SPACER, PISTON PIN	2		C
9	+	100015-04630	CIRCLIP, PISTON PIN	2		C
10		900162-05022	BOLT HSH	2	5*22	
11		A160-000890	COVER,CYLINDER	1		C
12		V202-000090	BOLT,4	2	4*16	C
13		X505-002310	LABEL,CAUTION	1	HOT CAUTION	D
14		A162-000130	GUARD,TOP	1		C
15		900253-05020	SCREW, TAPPING	1	5*20	
16		X524-001901	LABEL	1		D

Class : Consumable class

A:Fast moving parts B:Semi-fast moving parts C:Slow moving parts D:Order only as needed

CRANKCASE



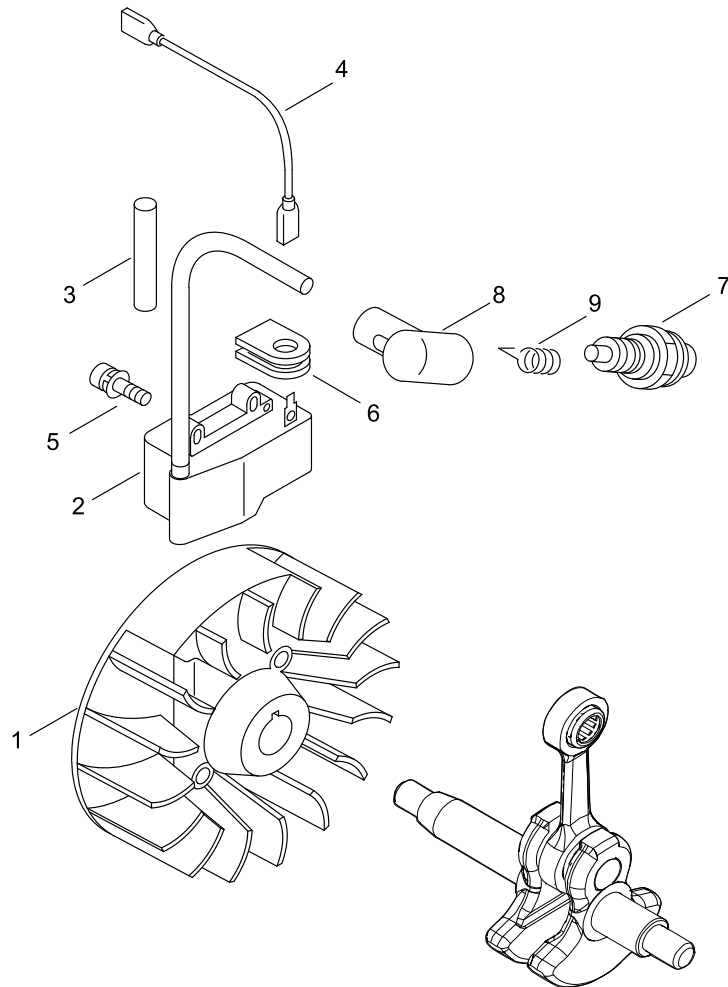
CRANKCASE

Key No.	LV (+)	Parts Number	Parts Description	Qty	Standard	Class
1		P021-041670	CRANKCASE KIT	1		D
2	+	900162-05028	BOLT HSH	3	5*28	
3	+	94095-36201	BEARING, BALL	2	6201	
4	+	100212-42031	OILSEAL	2	ISCD 12*22*4.5	C
5	+	100242-42030	GASKET, CRANKCASE	1		B

Class : Consumable class

A:Fast moving parts B:Semi-fast moving parts C:Slow moving parts D:Order only as needed

MAGNETO



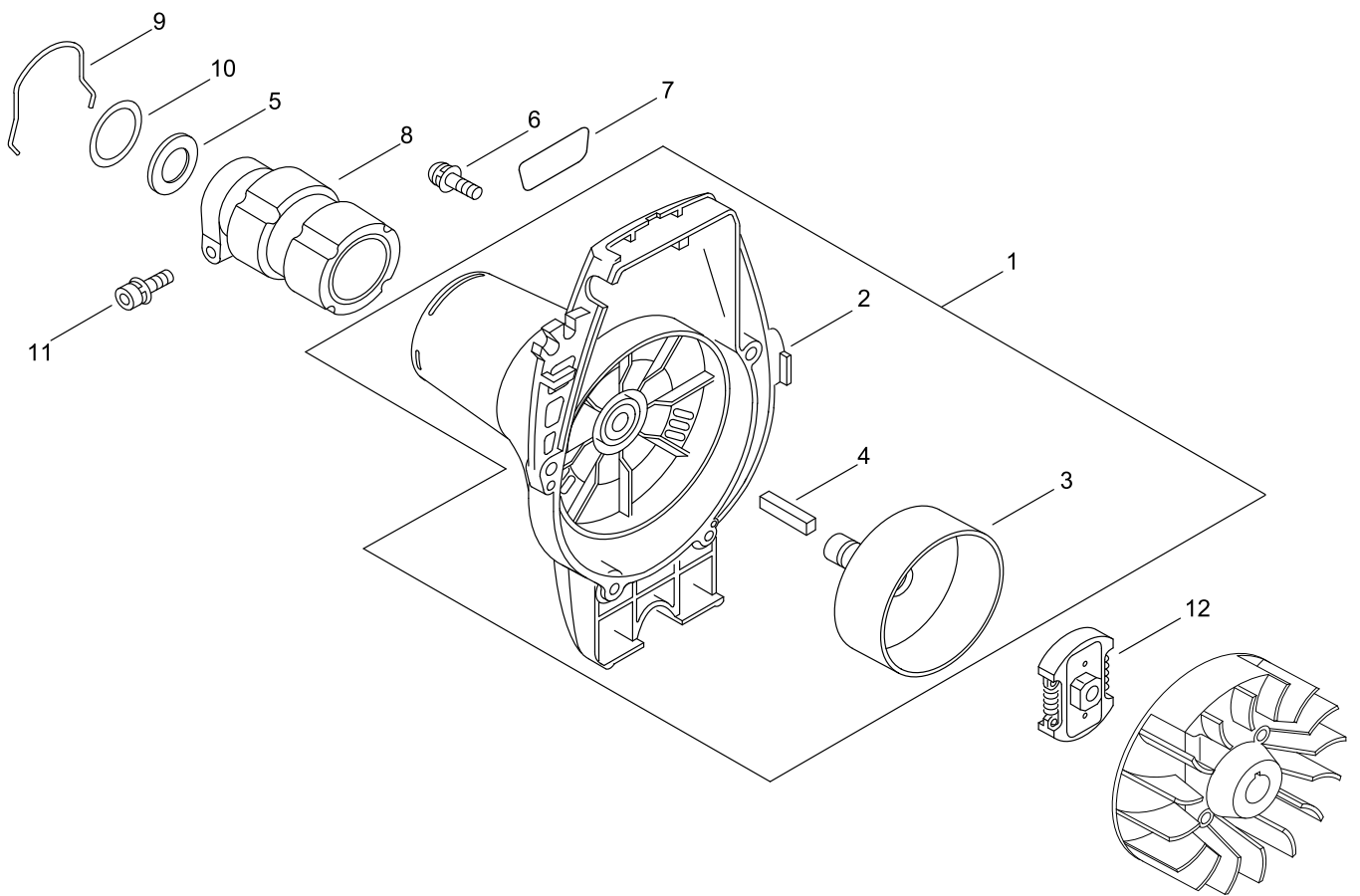
MAGNETO

Key No.	LV (+)	Parts Number	Parts Description	Qty	Standard	Class
1		A409-000160	ROTOR,MAGNETO	1		C
2		A411-000141	COIL,IGNITION	1	EMG-60G/61G L110	C
3		V475-007300	TUBE	1		C
4		162010-52830	LEAD, GROUND	1		C
5		900162-04020	BOLT HSH	2	4*20	
6		156112-40630	GROMMET	1		C
7		A425-000000	SPARKPLUG	1	BPMR8Y	A
8		159012-03433	CAP, SPARK PLUG	1		C
9		159011-03432	COIL, SPARK PLUG	1		C

Class : Consumable class

A:Fast moving parts B:Semi-fast moving parts C:Slow moving parts D:Order only as needed

CLUTCH



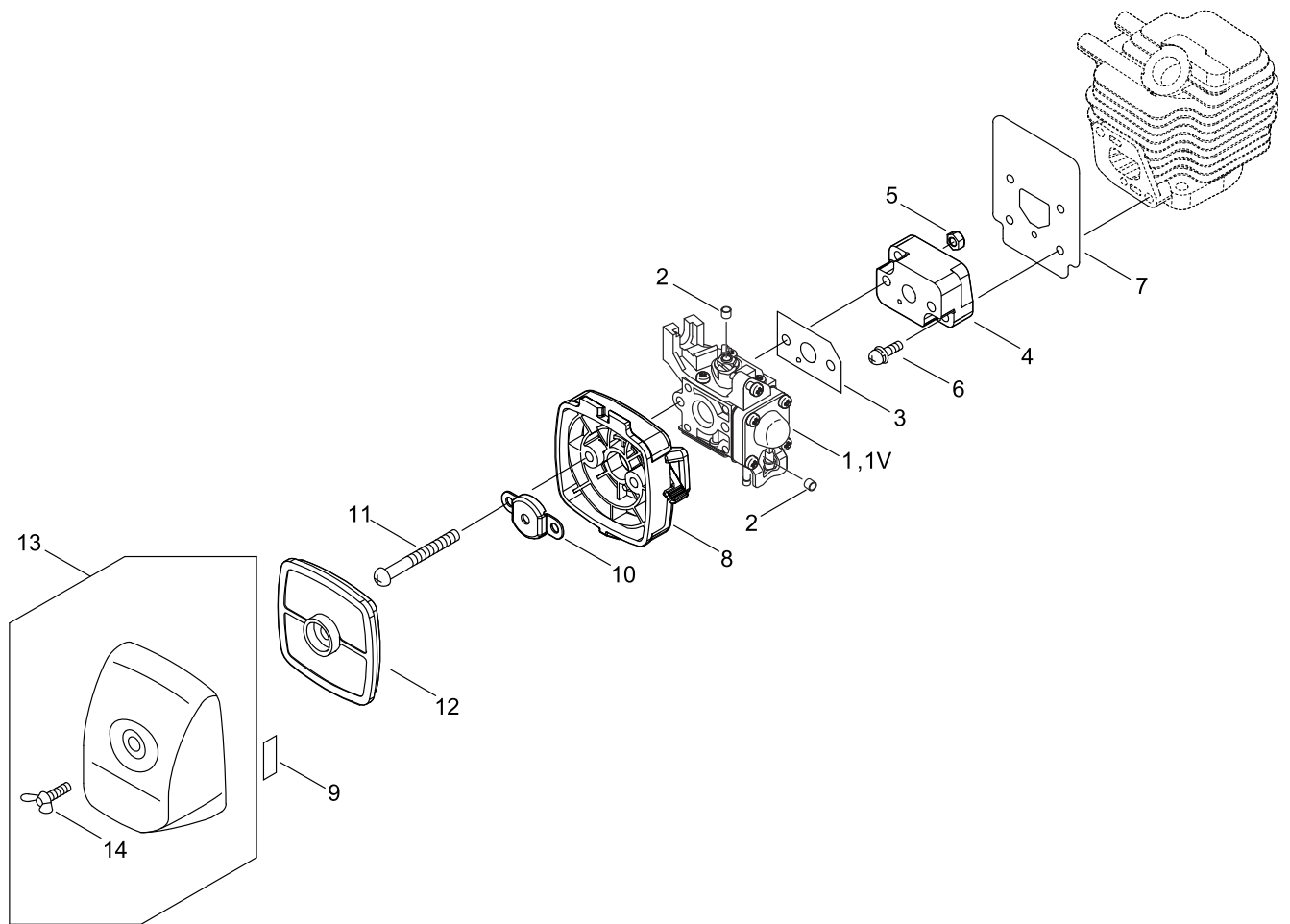
CLUTCH

Key No.	LV (+)	Parts Number	Parts Description	Qty	Standard	Class
1		P100-007580	FAN COVER ASY	1		C
2	+	A172-002790	COVER,FAN	1		C
3	+	175005-44331	DRUM, CLUTCH	1		B
4	+	V376-000990	SPACER	1		C
5		175313-20430	RING, FELT	1		C
6		91363-04016	SCREW	3	4*16	C
7		X547-002310	LABEL,ECHO	1	ECHO+SRM-222ES	D
8		A575-000110	FIXTURE,MAIN PIPE	1		C
9		660316-55630	CLIP	1		C
10		V315-000030	WASHER,CIRCULAR 30	1	33.5*41.0*T0.5	C
11		91118-05028	BOLT HSH	1	5*28	C
12		175000-56831	CLUTCH ASSEMBLY	1		B
12V		A056-000820	CLUTCH ASY	1	22 C0.5 D50 RESI	B

Class : Consumable class

A:Fast moving parts B:Semi-fast moving parts C:Slow moving parts D:Order only as needed

AIR CLEANER, CARBURETOR



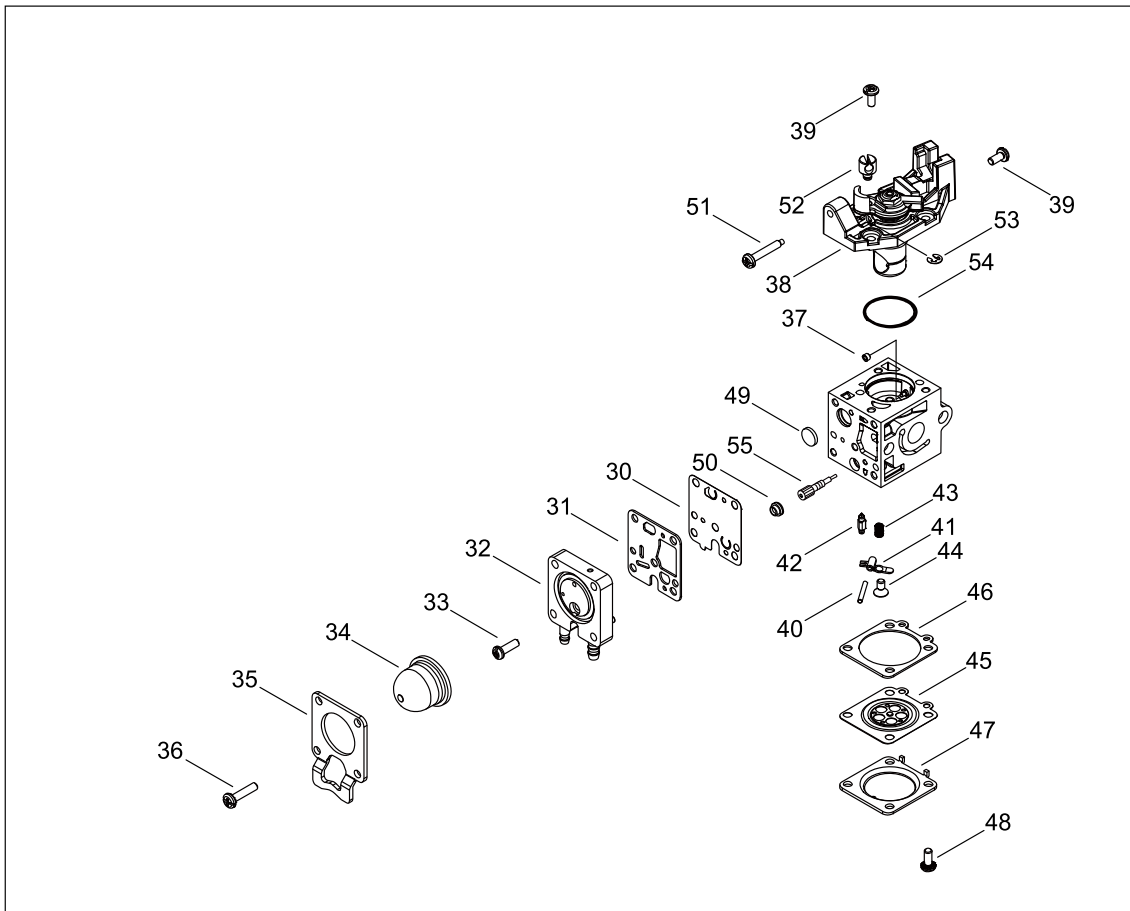
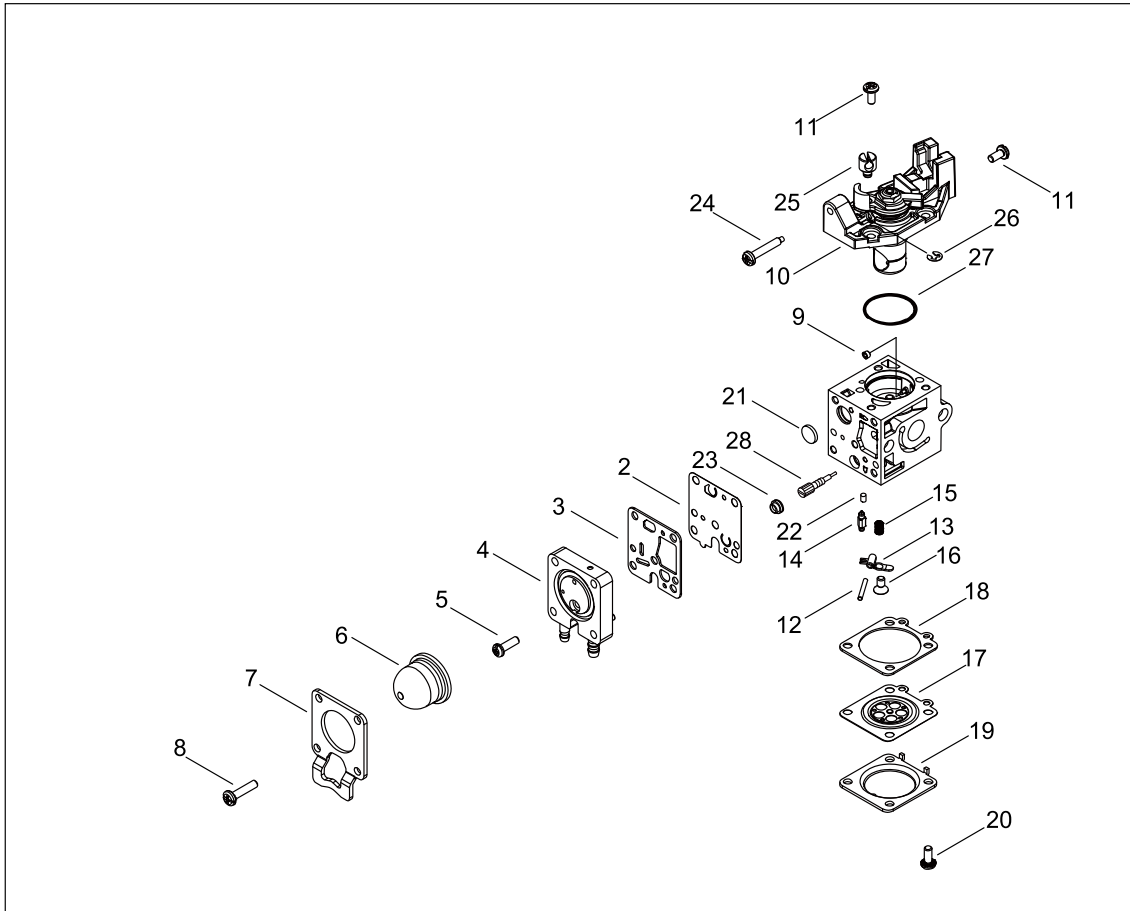
AIR CLEANER, CARBURETOR

Key No.	LV (+)	Parts Number	Parts Description	Qty	Standard	Class
1		A091-000000	CARBURETOR,ASSEMBLY	1	R09-001	B
1V		A091-000020	CARBURETOR,ASSEMBLY	1	R09-002	B
2		A259-000060	CAP,LIMITER	2	HLI	B
3		V103-001390	GASKET,INTAKE	1		A
4		130017-44331	INSULATOR	1		C
5		900500-00005	NUT	2	5	
6		900238-05022	SCREW	2	5*22	
7		V103-001640	GASKET,INTAKE	1		A
8		P021-049010	CASE,CLEANER	1		C
9		890332-52730	LABEL, CHOKE	1		D
10		129011-52730	PLATE, PREVENT	1		C
11		900220-05065	SCREW	2	5*65	
12		A226-001410	ELEMENT,AIR FILTER	1		A
13		P100-000110	CLEANER LID ASY	1		C
14	+	210417-52730	BOLT, WING	1	5*20	C

Class : Consumable class

A:Fast moving parts B:Semi-fast moving parts C:Slow moving parts D:Order only as needed

CARBURETOR



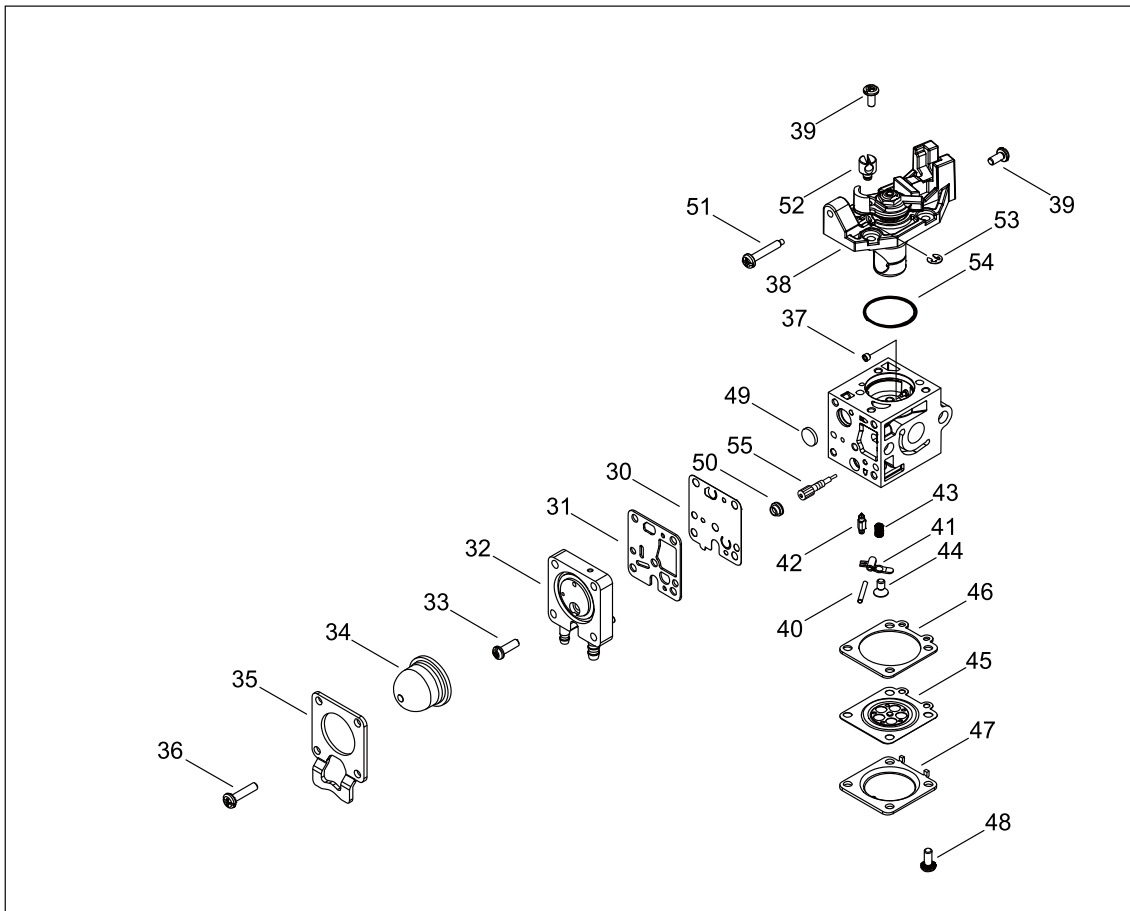
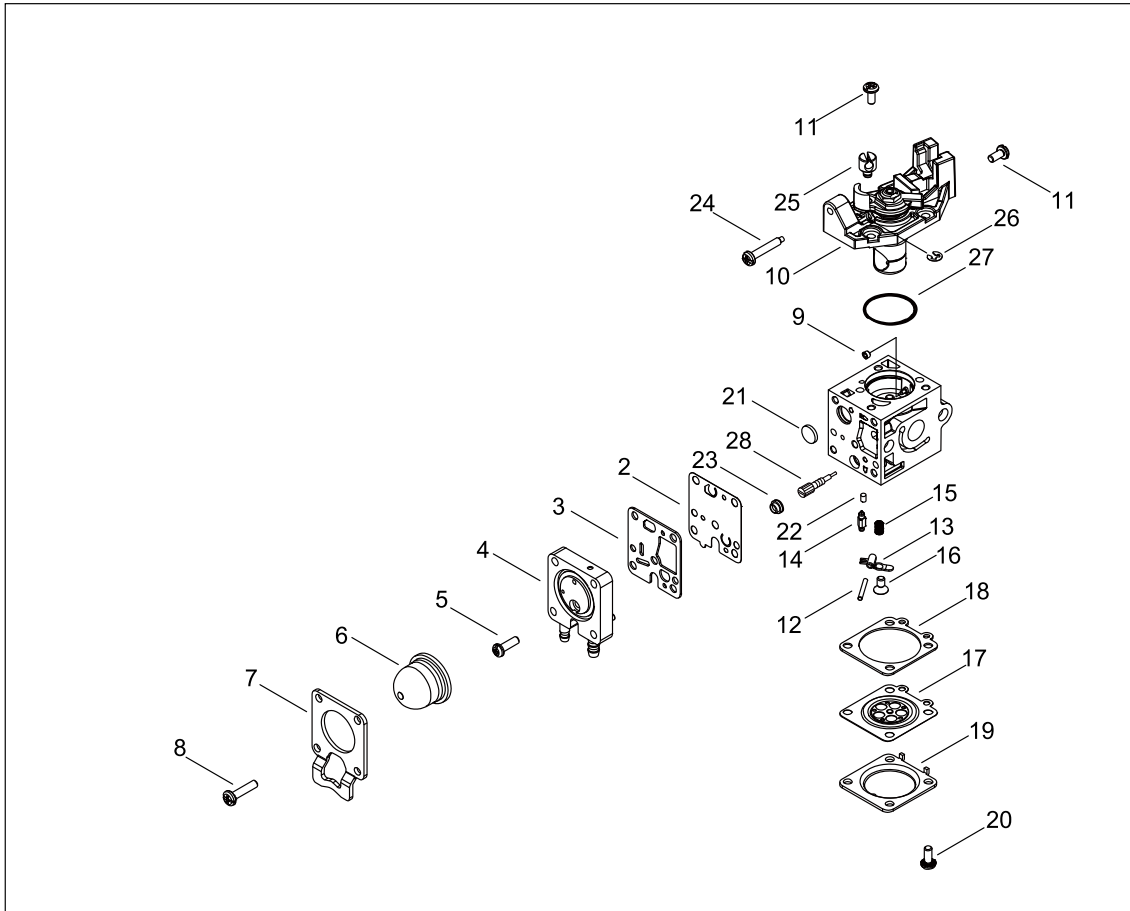
CARBURETOR

Key No.	LV (+)	Parts Number	Parts Description	Qty	Standard	Class
1		A091-000000	CARBURETOR,ASSEMBLY	1	R09-001	B
2	+	A909-000000	DAIAPHRAGM,PUMP	1		A
3	+	A910-000000	GASKET,PUMP	1	T=0.8	A
4	+	A944-000040	BASE,ASSEMBLY	1		D
5	+	A913-000000	SCREW	1	M3X10	D
6	+	A914-000000	PUMP, PRIMER	1		A
7	+	A915-000000	PLATE,SYRINGE	1	T=1.6	D
8	+	A913-000010	SCREW	4	M3X14	D
9	+	A916-000000	BEARING,ROTOR	1		D
10	+	A945-000010	COVER,ASSEMBLY	1		D
11	+	A913-000020	SCREW	4	M3X6.5	D
12	+	A949-000000	PIN	1		D
13	+	A929-000000	LEVER,METERING	1		D
14	+	A930-000000	VALVE,INLETNEEDLE	1		D
15	+	A931-000000	SPRING,METERING	1		D
16	+	A913-000030	SCREW	1	M3X4.0	D
17	+	A947-000000	METER.DIAPHRAGM,ASSE	1		A
18	+	A935-000000	GASKET,METERING	1	T=0.8	A
19	+	A936-000000	COVER,METERING	1		D
20	+	A913-000040	SCREW	4	M3X6.0	D
21	+	A938-000000	STRAINER	1	MESH#325	D
22	+	A921-000000	FRICTION	1		D
23	+	A940-000000	BUSH,PLUG	1		D
24	+	A941-000000	ADJUST SCREW,THROTTLE	1	M3X18.5	B
25	+	A927-000000	SWIVEL	1		D
26	+	A928-000000	E-RING	1	2.5	D
27	+	A937-000000	O-RING	1	19.0	D
28	+	A939-000000	ADJUST SCREW,MAIN	1		B
29		A091-000020	CARBURETOR,ASSEMBLY	1	R09-002	B
30	+	A909-000000	DAIAPHRAGM,PUMP	1		A
31	+	A910-000000	GASKET,PUMP	1	T=0.8	A
32	+	A944-000040	BASE,ASSEMBLY	1		D
33	+	A913-000000	SCREW	1	M3X10	D
34	+	A914-000000	PUMP, PRIMER	1		A
35	+	A915-000000	PLATE,SYRINGE	1	T=1.6	D
36	+	A913-000010	SCREW	4	M3X14	D
37	+	A916-000000	BEARING,ROTOR	1		D
38	+	A945-000010	COVER,ASSEMBLY	1		D
39	+	A913-000020	SCREW	4	M3X6.5	D
40	+	A949-000000	PIN	1		D
41	+	A929-000000	LEVER,METERING	1		D
42	+	A930-000000	VALVE,INLETNEEDLE	1		D
43	+	A931-000000	SPRING,METERING	1		D
44	+	A913-000030	SCREW	1	M3X4.0	D

Class : Consumable class

A:Fast moving parts B:Semi-fast moving parts C:Slow moving parts D:Order only as needed

CARBURETOR



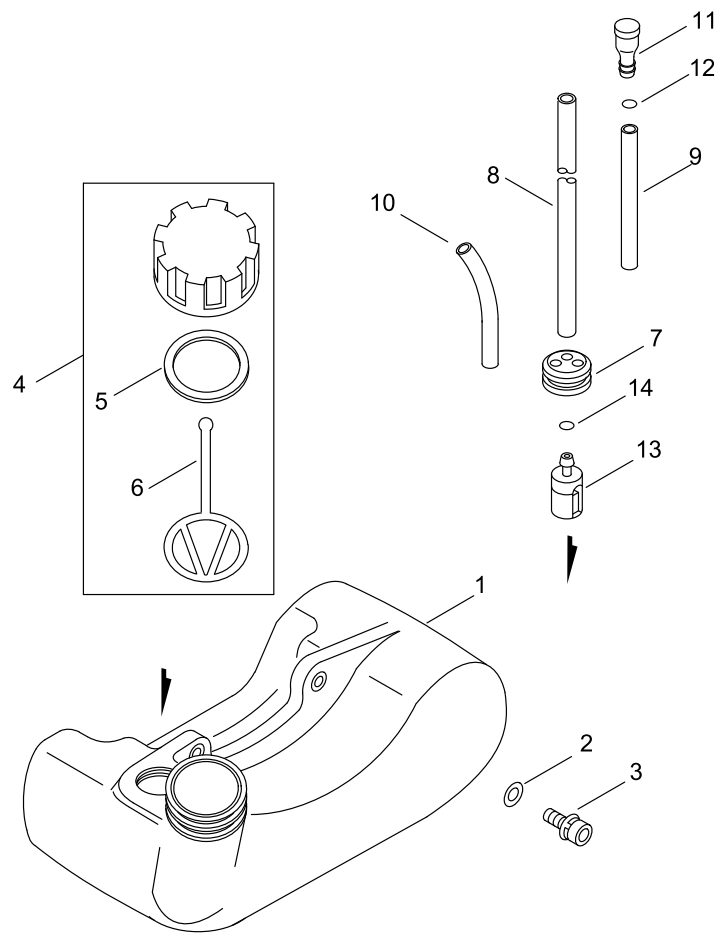
CARBURETOR

Key No.	LV (+)	Parts Number	Parts Description	Qty	Standard	Class
45	+	A947-000000	METER.DIAPHRAGM,ASSE	1		A
46	+	A935-000000	GASKET,METERING	1	T=0.8	A
47	+	A936-000000	COVER,METERING	1		D
48	+	A913-000040	SCREW	4	M3X6.0	D
49	+	A938-000000	STRAINER	1	MESH#325	D
50	+	A940-000000	BUSH,PLUG	1		D
51	+	A941-000000	ADJUST SCREW,THROTTLE	1	M3X18.5	B
52	+	A927-000000	SWIVEL	1		D
53	+	A928-000000	E-RING	1	2.5	D
54	+	A937-000000	O-RING	1	19.0	D
55	+	A939-000030	ADJUST SCREW,MAIN	1	0.46*1	B

Class : Consumable class

A:Fast moving parts B:Semi-fast moving parts C:Slow moving parts D:Order only as needed

FUEL TANK



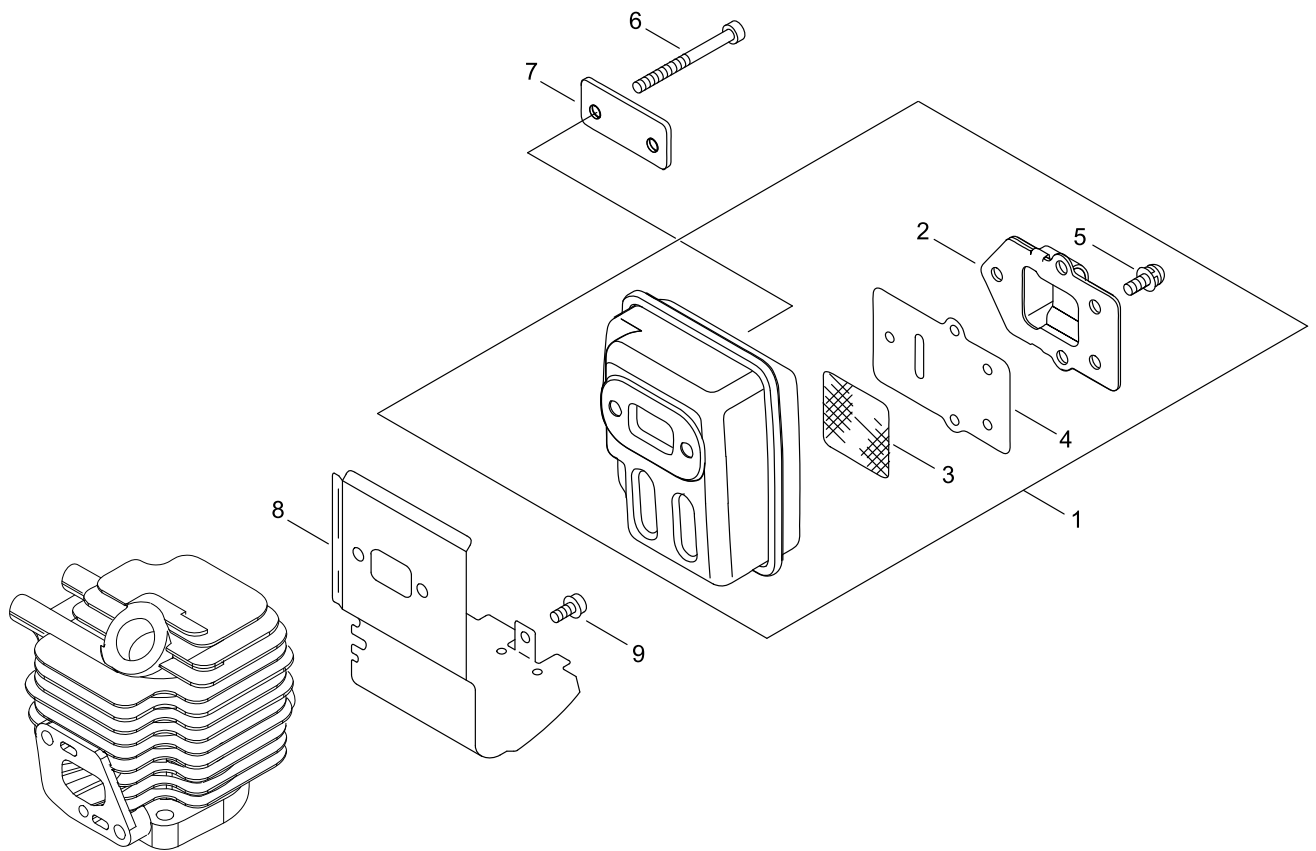
FUEL TANK

Key No.	LV (+)	Parts Number	Parts Description	Qty	Standard	Class
1		A350-000480	TANK, FUEL	1		C
2		900603-00005	WASHER	2	5	
3		91118-05020	BOLT HSH	2	5*20	C
4		P021-012211	CAP,FUEL ASY	1		C
5	+	V107-000190	GASKET,FUEL CAP	1	37.9* T 2.2	A
6	+	A365-000060	CONNECTOR,CAP	1	L=123	B
7		132115-46730	GROMMET, FUEL	1		C
8		V471-001191	PIPE	1	3*5*180	C
9		V471-001201	PIPE	1	3*5*70	C
10		132012-56030	PIPE	1	3*6*80 YL	C
11		A356-000031	VALVE,CHECK	1		B
12		V490-001240	CLIP	1		C
13		A369-000480	STRAINER, FUEL	1	125-959	A
14		V490-001240	CLIP	1		C

Class : Consumable class

A:Fast moving parts B:Semi-fast moving parts C:Slow moving parts D:Order only as needed

MUFFLER



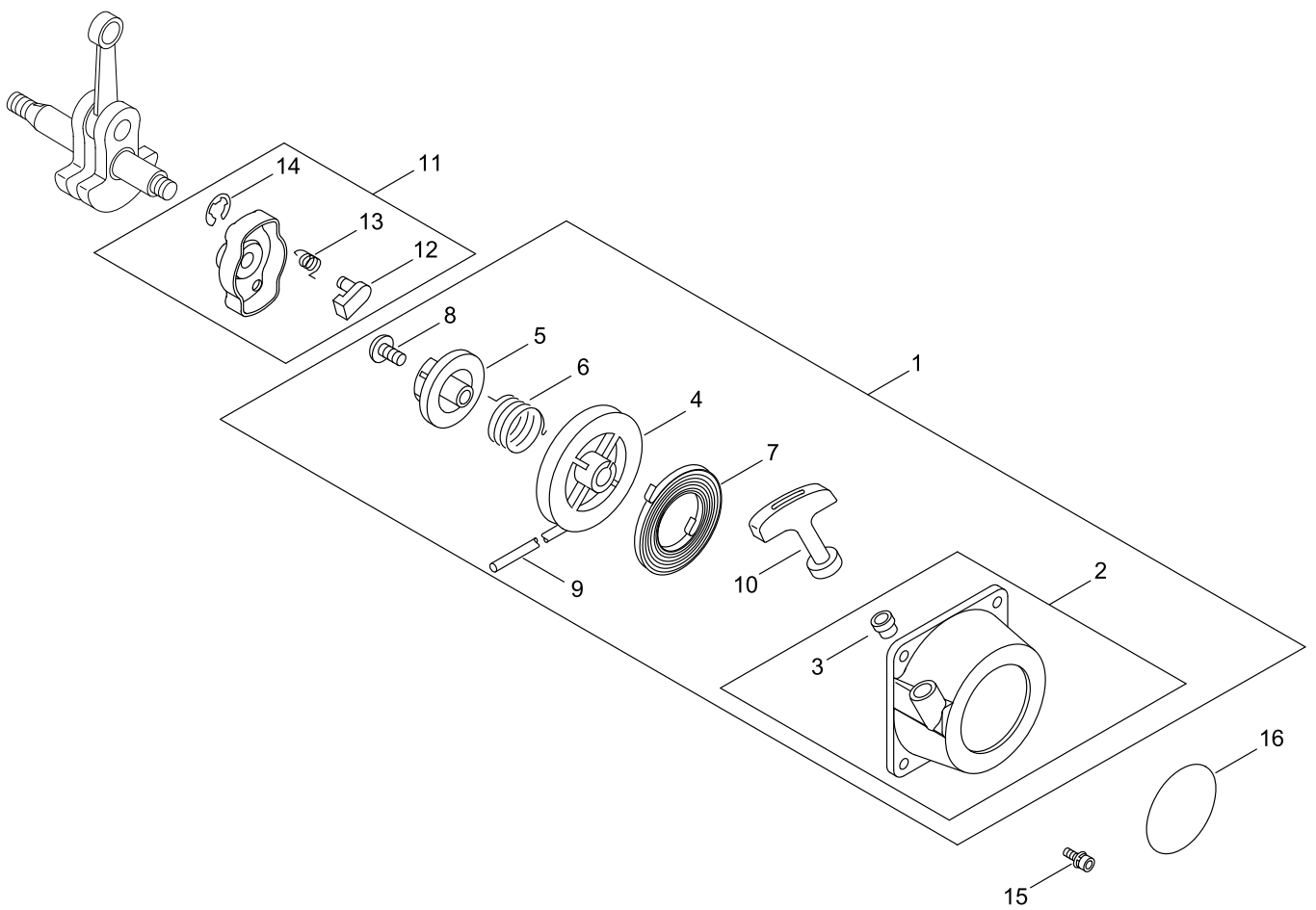
MUFFLER

Key No.	LV (+)	Parts Number	Parts Description	Qty	Standard	Class
1		P021-016643	MUFFLER ASY	1		C
2	+	A313-000600	GUIDE,EXH	1		C
3	+	145862-40630	SCREEN, MUFFLER	1		B
4	+	V104-001761	GASKET,EXHAUST	1		A
5	+	91367-04010	SCREW	5	4*10	C
6		900105-05055	BOLT HSH	2	5*55	
7		V150-000371	PLATE,EYE	1		C
8		V104-000500	GASKET,EXHAUST	1		A
9		91121-04008	BOLT HSH, FLANGE	1	4*8	C

Class : Consumable class

A:Fast moving parts B:Semi-fast moving parts C:Slow moving parts D:Order only as needed

RECOIL STARTER, PULLY



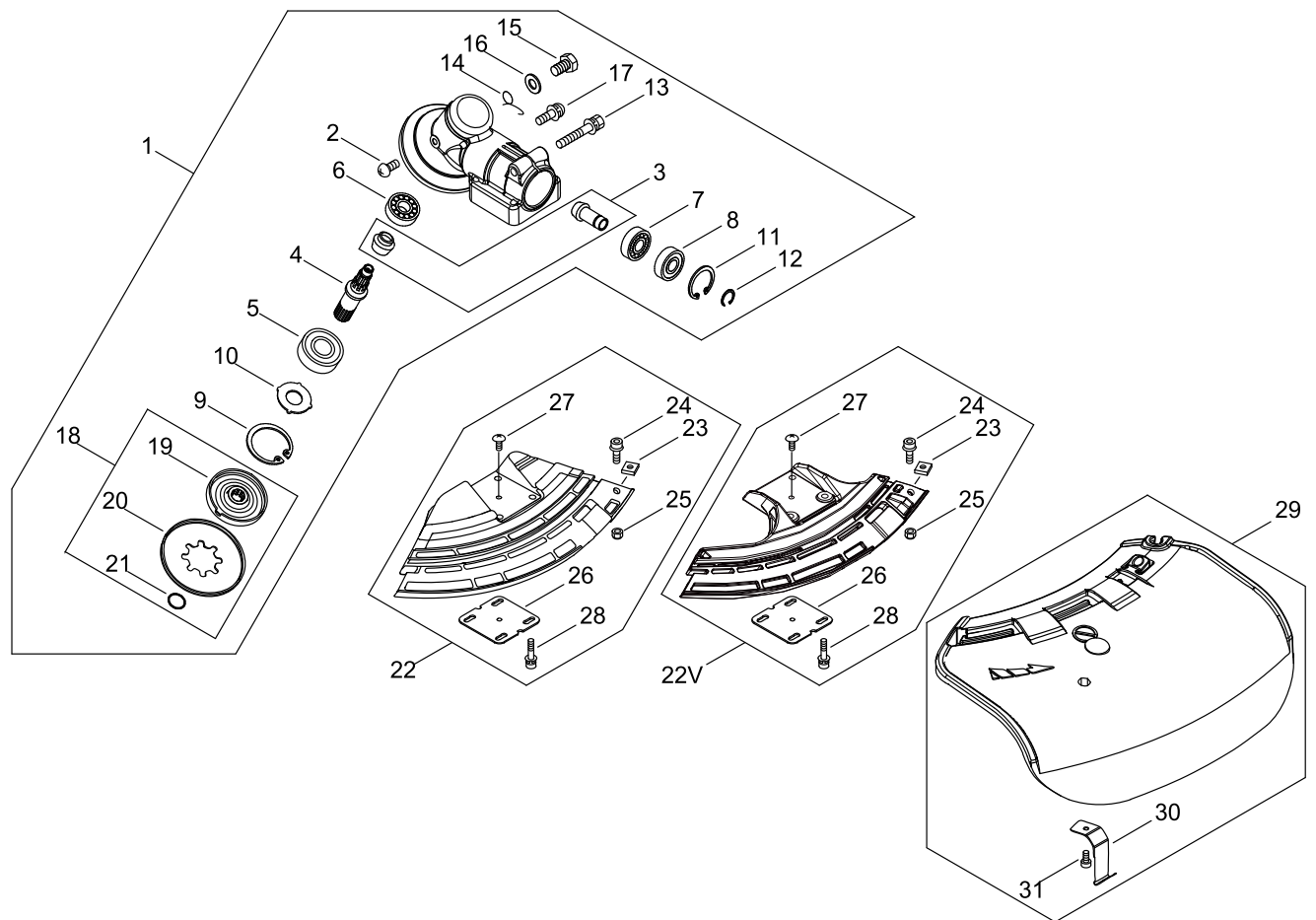
RECOIL STARTER, PULLY

Key No.	LV (+)	Parts Number	Parts Description	Qty	Standard	Class
1		A051-001411	STARTER,RECOIL ASY	1		B
2	+	P022-037150	STARTER CASE	1		C
3	+	P022-045770	GUIDE, ROPE	1		C
4	+	A506-000500	REEL, ROPE	1	A541 081 A12 00	C
5	+	A525-000020	CAM PLATE	1	A543 081 A12 00	C
6	+	P022-008270	SPRING,DAMPER	1		C
7	+	P022-019680	SPRING, SPIRAL	1		B
8	+	177236-61830	SCREW	1		
9	+	P022-025730	ROPE, STARTER	1		B
10	+	P022-036700	GRIP, STARTER	1		C
11		A052-000180	PULLEY,ASM STARTER	1		C
12	+	P022-002100	E-RING	2	4	C
13	+	P022-006510	SPRING, RETURN	2		C
14	+	P022-006850	PAWL, STARTER	2		C
15		V202-000090	BOLT,4	2	4*16	C
16		X502-000890	LABEL,ECHO	1		D

Class : Consumable class

A:Fast moving parts B:Semi-fast moving parts C:Slow moving parts D:Order only as needed

GEAR CASE, SHIELD



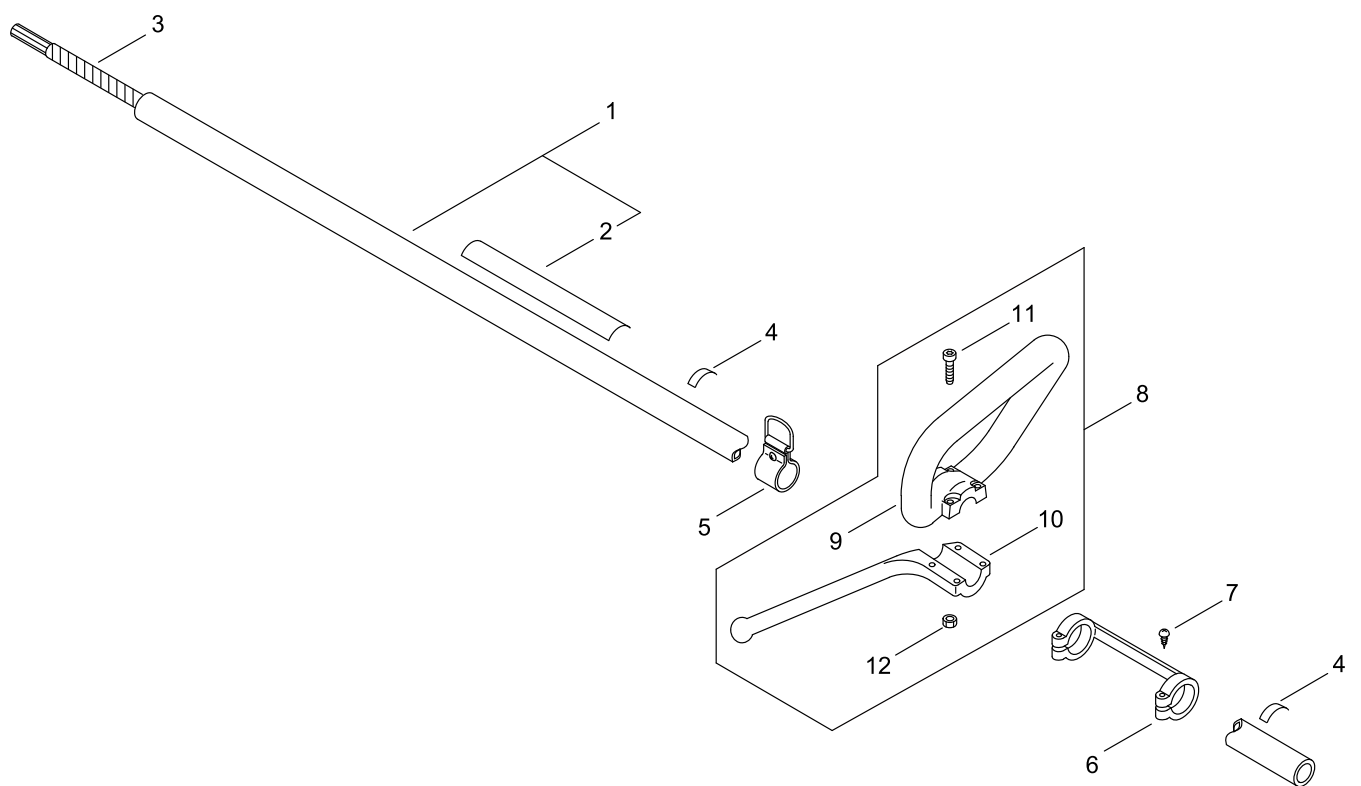
GEAR CASE, SHIELD

Key No.	LV (+)	Parts Number	Parts Description	Qty	Standard	Class
1		P021-013137	CASE ASY, GEAR	1		C
2	+	900220-04006	SCREW	1	4*6	
3	+	610300-42330	GEAR SET	1		D
4	+	610310-56832	SHAFT, P.T.O.	1	12*10*1	D
5	+	900812-06201	BEARING, BALL	1	6201LLU(DDU)	
6	+	94060-00626	BEARING, BALL	1	626	C
7	+	94060-06900	BEARING, BALL	1	6900	C
8	+	94063-06900	BEARING, BALL	1	6900Z	
9	+	900702-00032	RETAINING RING	1	CR-32	
10	+	610444-56830	WASHER	1		C
11	+	900702-00022	RETAINING RING	1	CR-22	
12	+	900706-00010	RETAINING RING	1	WR-10	
13	+	91118-06025	BOLT HSH	1	6*25	C
14	+	V452-001310	SPRING,TORSION	1		B
15	+	610434-50031	BOLT 8* 8	1	M8*8	B
16	+	900603-50008	WASHER	1	8.5*18*0.8T	C
17	+	91119-05012	BOLT HSH	1	5*12	C
18		P100-009780	FIXTURE, BLADE SET	1		B
19	++	610313-52132	FIXTURE, BLADE	1		C
20	++	610352-56830	PLATE, CUP	1		B
21	++	900720-00012	O-RING	1	P-12	
22		P021-038570	SHIELD ASY, BLADE	1		B
22V		P100-010890	SHIELD ASY	1		B
23	+	900565-00005	NUT, SQUARE	1	5	
24	+	91121-05025	BOLT HSH, FLANGE	1	5*25	C
25	+	900562-00005	NUT, LOCK	1	5	
26	+	C552-000200	PLATE, SHIELD	1		D
27	+	91316-04010	SCREW	1	4*10	C
28	+	V203-001980	BOLT,5	4		C
29		P021-002625	SHIELD, BLADE(W/KNIFE	1		B
30	+	C554-000001	KNIFE, CORD	1		B
31	+	91118-05018	BOLT HSH	1	5*18	C

Class : Consumable class

A:Fast moving parts B:Semi-fast moving parts C:Slow moving parts D:Order only as needed

MAIN PIPE, HANDLE



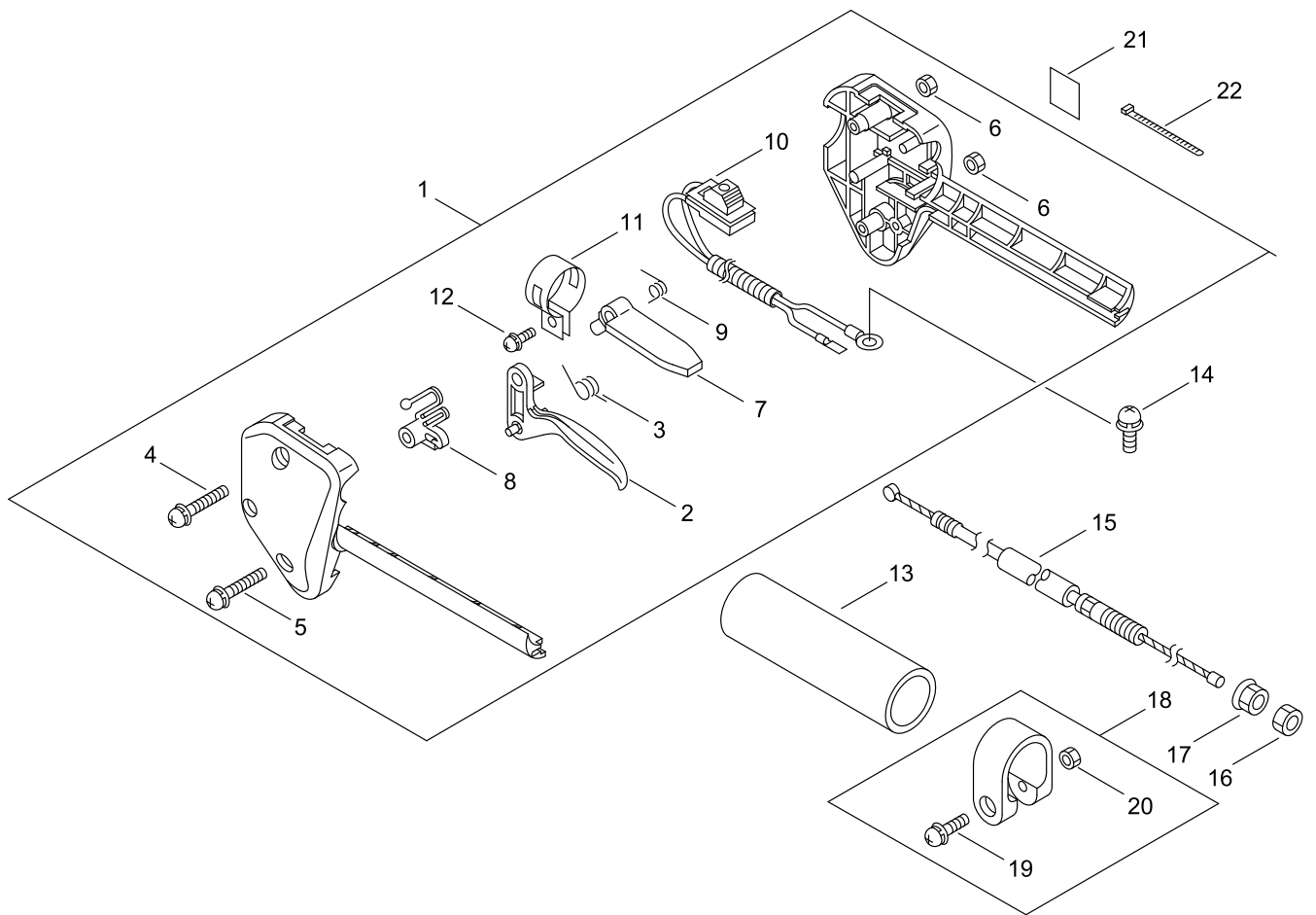
MAIN PIPE, HANDLE

Key No.	LV (+)	Parts Number	Parts Description	Qty	Standard	Class
1		P021-039930	PIPE,MAIN	1		C
2	+	890617-43130	LABEL,CAUTION	1		D
3		610013-44730	SHAFT, FLEXIBLE	1		B
4		890152-04930	LABEL, CAUTION	2		D
5		C063-000040	HOOK,LIFTING	1		C
6		610280-54131	COLLAR	1		C
7		900253-04025	SCREW, TAPPING	2	4*25	
8		P021-041500	FRONT HANDLE ASY	1		C
9	+	351214-40830	HANDLE, FRONT	1		C
10	+	351643-51730	BRACET, HANDLE	1		C
11	+	900242-05035	SCREW	4	5*35	
12	+	900500-00005	NUT	4	5	

Class : Consumable class

A:Fast moving parts B:Semi-fast moving parts C:Slow moving parts D:Order only as needed

THROTTLE



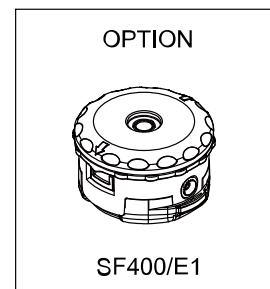
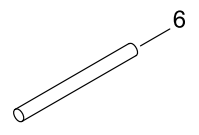
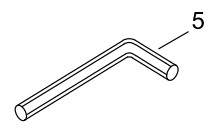
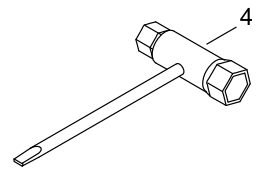
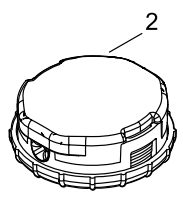
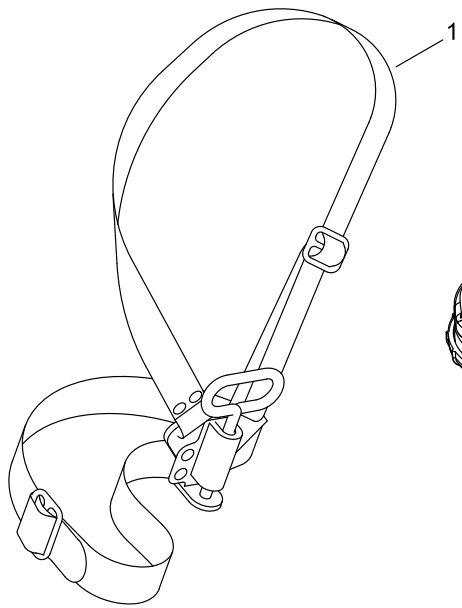
THROTTLE

Key No.	LV (+)	Parts Number	Parts Description	Qty	Standard	Class
1		P100-007600	THROTTLE ASY	1		C
2	+	178010-52130	CONTROL, THROTTLE	1		C
3	+	178043-42230	SPRING, THR. RETURN	1		B
4	+	900242-05035	SCREW	1	5*35	
5	+	900242-05025	SCREW	1	5*25	
6	+	900500-00005	NUT	2	5	
7	+	178090-52632	LOCKOUT, T. CONTROL	1		C
8	+	178012-52630	LOCKOUT, THROTTLE	1		C
9	+	178013-52630	SPRING, THR. LOCK	1		B
10	+	A440-000833	SWITCH, ON OFF	1		C
11	+	V495-003610	BAND	1		C
12	+	900242-05014	SCREW	1	5*14	
13		C403-000140	GRIP, HANDLE	1	L129.5*28	C
14		91363-04016	SCREW	1	4*16	C
15		V430-002290	CABLE,BOWDEN	1	330+61	B
16		900502-00006	NUT	1	6	
17		900518-00006	NUT, FLANGE	1	6	
18		P021-014550	BAND 25	1		C
19	+	900242-05028	SCREW	1	5*28	
20	+	900500-00005	NUT	1	5	
21		890157-39130	LABEL, SWITCH	1		D
22		V495-002690	BAND	2	CV-100	C

Class : Consumable class

A:Fast moving parts B:Semi-fast moving parts C:Slow moving parts D:Order only as needed

ACCESSORIES



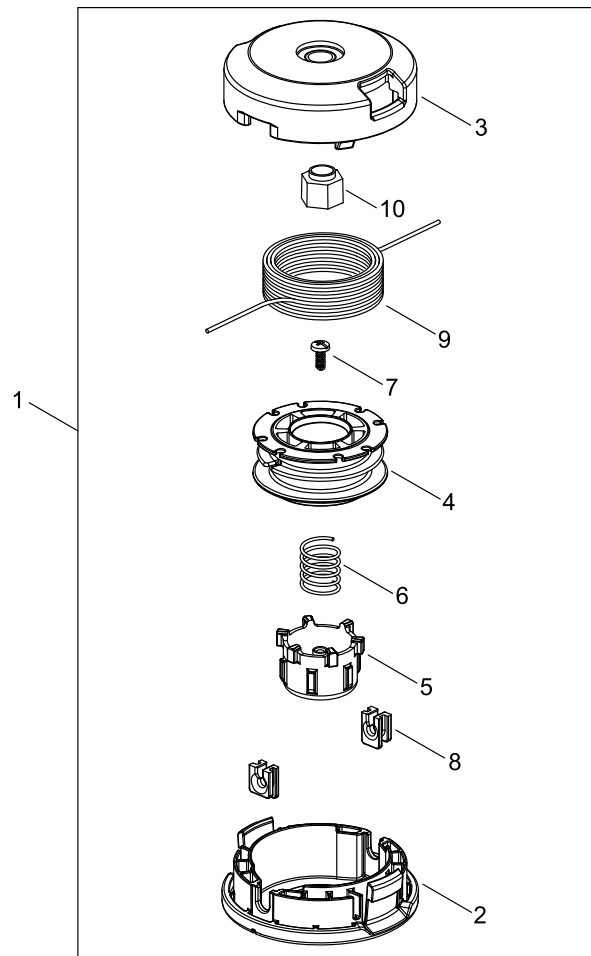
ACCESSORIES

Key No.	LV (+)	Parts Number	Parts Description	Qty	Standard	Class
1		301001-46731	HARNESS, SHOULDER	1	L1910,L1550	B
2		X047-000430	CUTTER,ASM LINE	1		A
4		X602-000080	TOOL,WRENCH	1	13*19 L180	D
5		X605-000200	TOOL,L WRENCH	1	4MM M5	D
6		X606-000080	TOOL,BAR	1	5*120	D

Class : Consumable class

A:Fast moving parts B:Semi-fast moving parts C:Slow moving parts D:Order only as needed

NYLON LINE CUTTER



NYLON LINE CUTTER

Key No.	LV (+)	Parts Number	Parts Description	Qty	Standard	Class
1		X047-000430	CUTTER,ASM LINE	1		A
2	+	P022-025530	CASE	1		D
3	+	P022-025540	COVER	1		D
4	+	P022-025550	REEL	1		D
5	+	P022-025560	BUTTON	1		D
6	+	P022-025570	RETURN SPRING	1		D
7	+	P022-025580	SET SCREW	1		D
8	+	P022-025590	CORD GUIDE	2		D
9	+	P022-025600	NYLON CORD	1		A
10	+	P022-025610	SHAFT	1		D

Class : Consumable class

A:Fast moving parts B:Semi-fast moving parts C:Slow moving parts D:Order only as needed

NUMERICAL PARTS INDEX

Part No	Part description	Page	Part No	Part description	Page	Part No	Part description	Page
100013-11520	PIN, PISTON	2	900220-04006	SCREW	22	A091-000000	CARBURETOR, ASSEMBLY	12
100014-11520	SPACER, PISTON PIN	2	900220-05065	SCREW	10	A091-000020	CARBURETOR, ASSEMBLY	10
100015-04630	CIRCLIP, PISTON PIN	2	900238-05022	SCREW	10	A091-000020	CARBURETOR, ASSEMBLY	12
100212-42031	OILSEAL	4	900242-05014	SCREW	26	A101-000090	RING,PISTON	2
100242-42030	GASKET, CRANKCASE	4	900242-05025	SCREW	26	A130-002100	CYLINDER	2
101010-44332	GASKET, CYL. BASE	2	900242-05028	SCREW	26	A160-000890	COVER,CYLINDER	2
129011-52730	PLATE, PREVENT	10	900242-05035	SCREW	24	A162-000130	GUARD, TOP	2
130017-44331	INSULATOR	10	900242-05035	SCREW	26	A172-002790	COVER, FAN	8
132012-56030	PIPE	16	900253-04025	SCREW, TAPPING	24	A226-001410	ELEMENT, AIR FILTER	10
132115-46730	GROMMET, FUEL	16	900253-05020	SCREW, TAPPING	2	A259-000060	CAP, LIMITER	10
145862-40630	SCREEN, MUFFLER	18	900500-00005	NUT	10	A313-000600	GUIDE, EXH	18
156112-40630	GROMMET	6	900500-00005	NUT	24	A350-000480	TANK, FUEL	16
159011-03432	COIL, SPARK PLUG	6	900500-00005	NUT	26	A356-000031	VALVE, CHECK	16
159012-03433	CAP, SPARK PLUG	6	900502-00006	NUT	26	A365-000060	CONNECTOR, CAP	16
162010-52830	LEAD, GROUND	6	900518-00006	NUT, FLANGE	26	A369-000480	STRAINER, FUEL	16
175000-56831	CLUTCH ASSEMBLY	8	900562-00005	NUT, LOCK	22	A409-000160	ROTOR, MAGNETO	6
175005-44331	DRUM, CLUTCH	8	900565-00005	NUT, SQUARE	22	A411-000141	COIL, IGNITION	6
175313-20430	RING, FELT	8	900603-00005	WASHER	16	A425-000000	SPARKPLUG	6
177236-61830	SCREW	20	900603-50008	WASHER	22	A440-000833	SWITCH, ON OFF	26
178010-52130	CONTROL, THROTTLE	26	900702-00022	RETAINING RING	22	A506-000500	REEL, ROPE	20
178012-52630	LOCKOUT, THROTTLE	26	900702-00032	RETAINING RING	22	A525-000020	CAM PLATE	20
178013-52630	SPRING, THR. LOCK	26	900706-00010	RETAINING RING	22	A575-000110	FIXTURE, MAIN PIPE	8
178043-42230	SPRING, THR. RETURN	26	900720-00012	O-RING	22	A909-000000	DAIAPHRAGM, PUMP	12
178090-52632	LOCKOUT, T. CONTROL	26	900812-06201	BEARING, BALL	22	A910-000000	GASKET, PUMP	12
210417-52730	BOLT, WING	10	91118-05018	BOLT HSH	22	A913-000000	SCREW	12
301001-46731	HARNESS, SHOULDER	28	91118-05020	BOLT HSH	16	A913-000010	SCREW	12
351214-40830	HANDLE, FRONT	24	91118-05028	BOLT HSH	8	A913-000020	SCREW	12
351643-51730	BRACET, HANDLE	24	91118-06025	BOLT HSH	22	A913-000030	SCREW	12
610013-44730	SHAFT, FLEXIBLE	24	91119-05012	BOLT HSH	22	A913-000040	SCREW	12
610280-54131	COLLAR	24	91121-04008	BOLT HSH, FLANGE	18	A913-000040	SCREW	14
610300-42330	GEAR SET	22	91121-05025	BOLT HSH, FLANGE	22	A914-000000	PUMP, PRIMER	12
610310-56832	SHAFT, P.T.O.	22	91316-04010	SCREW	22	A915-000000	PLATE, SYRINGE	12
610313-52132	FIXTURE, BLADE	22	91363-04016	SCREW	8	A916-000000	BEARING, ROTOR	12
610352-56830	PLATE, CUP	22	91363-04016	SCREW	26	A921-000000	FRICTION	12
610434-50031	BOLT 8* 8	22	91367-04010	SCREW	18	A927-000000	SWIVEL	12
610444-56830	WASHER	22	94060-00626	BEARING, BALL	22	A927-000000	SWIVEL	14
660316-55630	CLIP	8	94060-06900	BEARING, BALL	22	A928-000000	E-RING	12
890152-04930	LABEL, CAUTION	24	94063-06900	BEARING, BALL	22	A928-000000	E-RING	14
890157-39130	LABEL, SWITCH	26	94095-36201	BEARING, BALL	4	A929-000000	LEVER, METERING	12
890332-52730	LABEL, CHOKE	10	A011-001410	CRANKSHAFT, ASY	2	A930-000000	VALVE, INLET NEEDLE	12
890617-43130	LABEL, CAUTION	24	A051-001411	STARTER, RECOIL ASY	20	A931-000000	SPRING, METERING	12
900105-05055	BOLT HSH	18	A052-000180	PULLEY, ASM STARTER	20	A935-000000	GASKET, METERING	12
900162-04020	BOLT HSH	6	A056-000820	CLUTCH ASY	8	A935-000000	GASKET, METERING	14
900162-05022	BOLT HSH	2	A091-000000	CARBURETOR, ASSEMBLY	10	A936-000000	COVER, METERING	12
900162-05028	BOLT HSH	4						

NUMERICAL PARTS INDEX

Part No	Part description	Page	Part No	Part description	Page
A936-000000	COVER,METERING	14	P022-025600	NYLON CORD	30
A937-000000	O-RING	12	P022-025610	SHAFT	30
A937-000000	O-RING	14	P022-025730	ROPE, STARTER	20
A938-000000	STRAINER	12	P022-036700	GRIP, STARTER	20
A938-000000	STRAINER	14	P022-037150	STARTER CASE	20
A939-000000	ADJUST SCREW,MAIN	12	P022-045770	GUIDE, ROPE	20
A939-000030	ADJUST SCREW,MAIN	14	P100-000110	CLEANER LID ASY	10
A940-000000	BUSH,PLUG	12	P100-007580	FAN COVER ASY	8
A940-000000	BUSH,PLUG	14	P100-007600	THROTTLE ASY	26
A941-000000	ADJUST SCREW, THROTTLE	12	P100-009780	FIXTURE, BLADE SET	22
A941-000000	ADJUST SCREW, THROTTLE	14	P100-010890	SHIELD ASY	22
A941-000000	ADJUST SCREW, THROTTLE	14	V103-001390	GASKET,INTAKE	10
A944-000040	BASE,ASSEMBLY	12	V103-001640	GASKET,INTAKE	10
A945-000010	COVER,ASSEMBLY	12	V104-000500	GASKET,EXHAUST	18
A947-000000	METER,DIAPHRAGM, ASSE	12	V104-001761	GASKET,EXHAUST	18
A947-000000	METER,DIAPHRAGM, ASSE	14	V107-000190	GASKET,FUEL CAP	16
A947-000000	METER,DIAPHRAGM, ASSE	14	V150-000371	PLATE,EYE	18
A949-000000	PIN	12	V202-000090	BOLT,4	2
C063-000040	HOOK,LIFTING	24	V202-000090	BOLT,4	20
C403-000140	GRIP, HANDLE	26	V203-001980	BOLT,5	22
C552-000200	PLATE, SHIELD	22	V315-000030	WASHER,CIRCULAR 30	8
C554-000001	KNIFE,CORD	22	V376-000990	SPACER	8
P021-002625	SHIELD,BLADE(W/KNIFE)	22	V430-002290	CABLE,BOWDEN	26
P021-007712	PISTON KIT	2	V452-001310	SPRING,TORSION	22
P021-012211	CAP,FUEL ASY	16	V471-001191	PIPE	16
P021-013137	CASE ASY, GEAR	22	V471-001201	PIPE	16
P021-014550	BAND 25	26	V475-007300	TUBE	6
P021-016643	MUFFLER ASY	18	V490-001240	CLIP	16
P021-038570	SHIELD ASY, BLADE	22	V495-002690	BAND	26
P021-039930	PIPE,MAIN	24	V495-003610	BAND	26
P021-041500	FRONT HANDLE ASY	24	V553-000060	BEARING,NEEDLE 8	2
P021-041670	CRANKCASE KIT	4	X047-000430	CUTTER,ASM LINE	28
P021-049010	CASE,CLEANER	10	X047-000430	CUTTER,ASM LINE	30
P022-002100	E-RING	20	X502-000890	LABEL,ECHO	20
P022-006510	SPRING, RETURN	20	X505-002310	LABEL,CAUTION	2
P022-006850	PAWL, STARTER	20	X524-001901	LABEL	2
P022-008270	SPRING,DAMPER	20	X547-002310	LABEL,ECHO	8
P022-019680	SPRING, SPIRAL	20	X602-000080	TOOL,WRENCH	28
P022-025530	CASE	30	X605-000200	TOOL,L WRENCH	28
P022-025540	COVER	30	X606-000080	TOOL,BAR	28
P022-025550	REEL	30			
P022-025560	BUTTON	30			
P022-025570	RETURN SPRING	30			
P022-025580	SET SCREW	30			
P022-025590	CORD GUIDE	30			