

# CS-310ES

Serial Number

38000001-38999999

Last updated date

15/Jan/2023

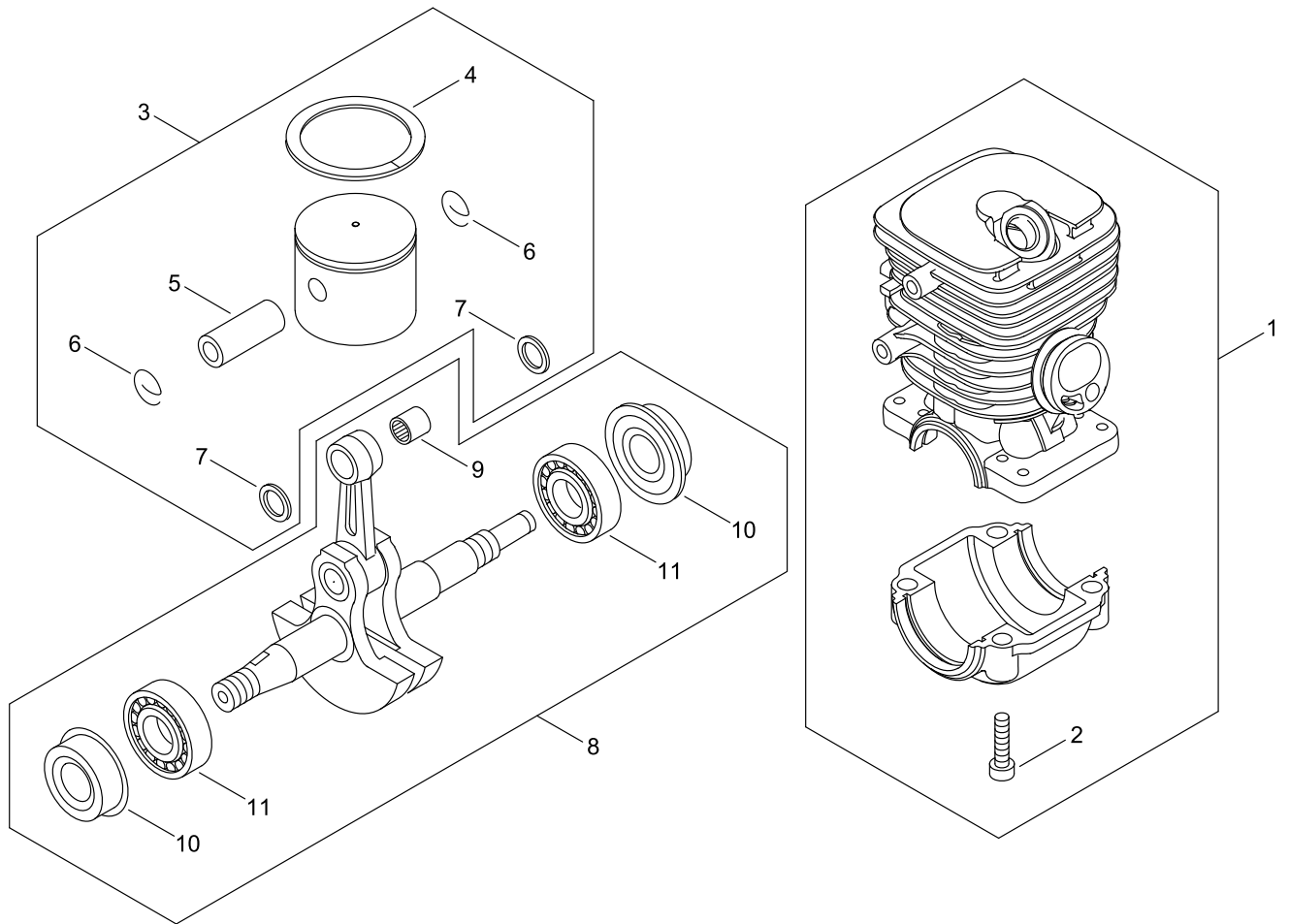


## TABLE OF CONTENTS

---

CYLINDER, PISTON, CRANKSHAFT .....	1
ENGINE COVER.....	3
MAGNETO.....	5
AIR CLEANER, CARBURETOR.....	7
CARBURETOR.....	9
CARBURETOR 2.....	11
MUFFLER.....	13
RECOIL STARTER.....	15
HANDLE.....	17
CHAIN BRAKE.....	19
ACCESSORIES .....	21
GUIDE BAR, CHAIN.....	23

# CYLINDER, PISTON, CRANKSHAFT



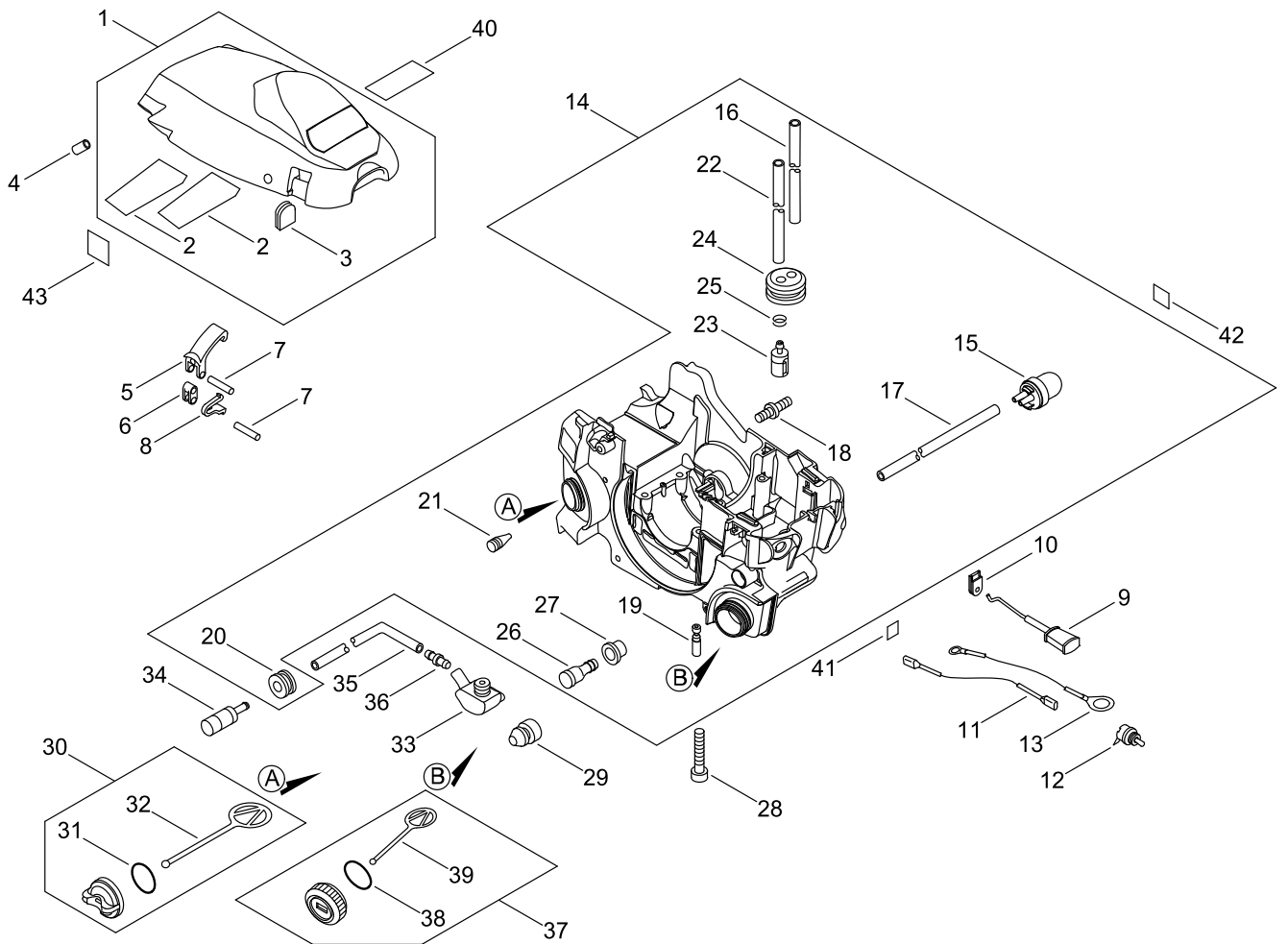
## CYLINDER, PISTON, CRANKSHAFT

Key No.	LV (+)	Parts Number	Parts Description	Qty	Standard	Class
1		P021-015050	CRANK CASE KIT	1		
2	+	V805-000220	BOLT, TORX 5	4	TB-5*25 12.9	C
3		P021-015061	PISTON KIT	1		
4	+	100011-16131	RING, PISTON	1		B
5	+	100013-15330	PIN, PISTON	1	5.5*8*29	D
6	+	100015-04630	CIRCLIP, PISTON PIN	2		C
7	+	100014-11520	SPACER, PISTON PIN	2		C
8		P021-015072	CRANKSHAFT,ASSY	1		D
9	+	V553-000060	BEARING,NEEDLE 8	1	HK0810FMV4	B
10	+	V505-000011	SEAL,OIL 12	2	12*32*5.5	C
11	+	94035-36201	BEARING, BALL	2	6201	

Class : Consumable class

A:Fast moving parts B:Semi-fast moving parts C:Slow moving parts D:Order only as needed

# ENGINE COVER



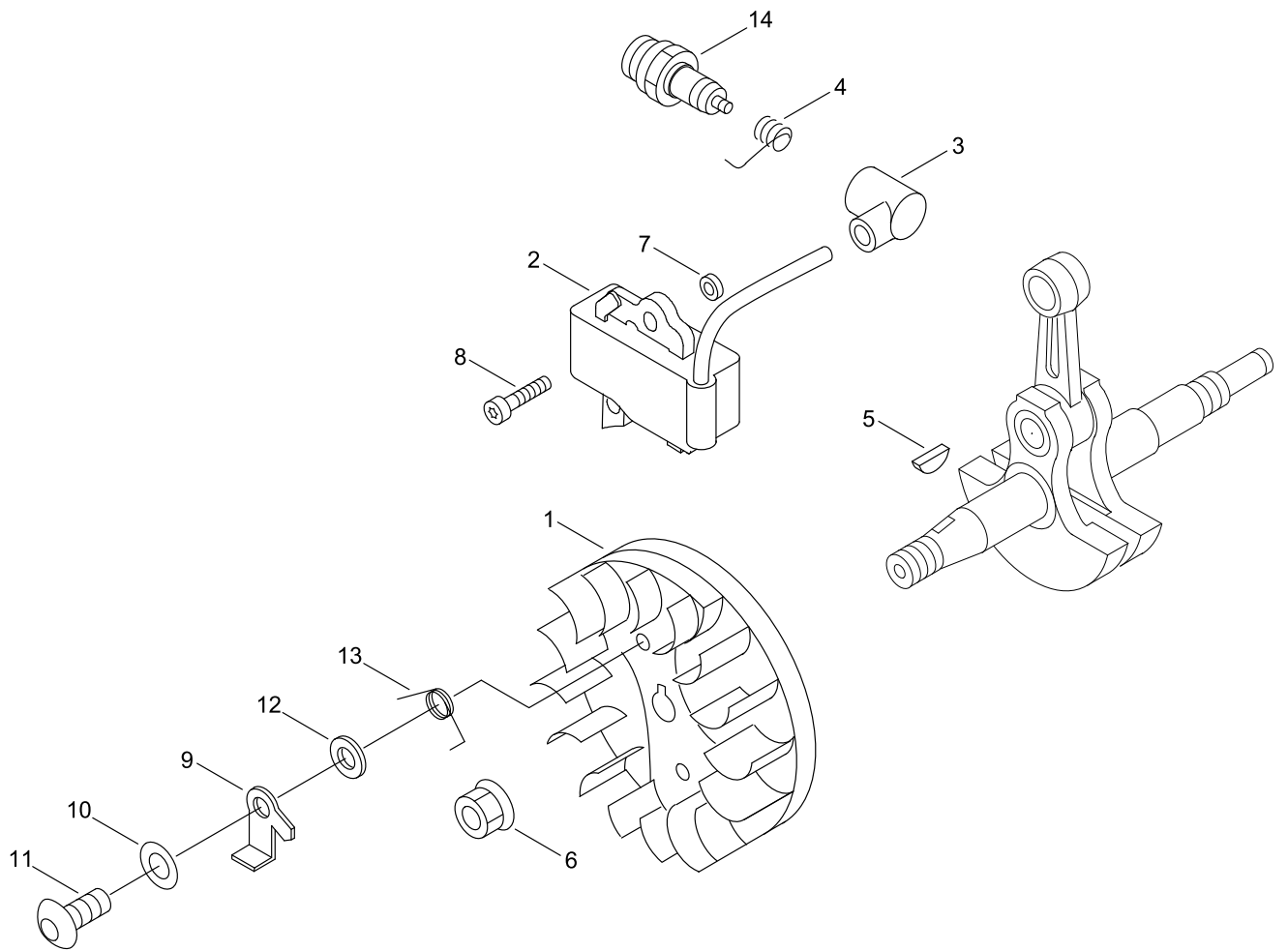
## ENGINE COVER

Key No.	LV (+)	Parts Number	Parts Description	Qty	Standard	Class
1		P100-007260	CYLINDER COVER ASY	1		
2	+	V341-000120	WASHER,SQUARE	2		C
3	+	130338-32430	PLUG, COVER	1		B
4		100927-35830	PIPE	1	3*7*10	C
5		C463-000100	KNOB, LATCH	2		C
6		J485-000200	HINGE	2		D
7		V622-000070	PIN,STRAIGHT 4	4	F4*17.8	C
8		V490-000400	CLIP	2		C
9		A241-000150	KNOB, CHOKE	1		C
10		V130-000010	GROMMET,CHOKE	1		C
11		V485-001080	LEAD	1	L235,#187,#250	C
12		A440-001190	SWITCH, ON OFF	1		C
13		V485-001070	LEAD	1	#LA105 L255	C
14		P100-007270	ENGINE COVER ASY	1		
15	+	123181-39130	PUMP, PRIMER	1		A
16	+	V471-001561	PIPE	1	2.4*5*80	C
17	+	V471-002191	PIPE	1	2.4*5*125	C
18	+	V225-000370	BOLT,STUD 8	2	M8	C
19	+	C022-000190	AUTO-OILER ASSEMBLY	1		C
20	+	132115-01462	GROMMET	1		C
21	+	436114-13930	VALVE, CHECK	1		B
22	+	V471-002171	PIPE	1	3*5*230	C
23	+	A369-000420	STRAINER, FUEL	1	ES-16499	A
24	+	132115-44331	GROMMET, FUEL	1		C
25	+	V490-001240	CLIP	1		C
26	+	A356-000031	VALVE,CHECK	1		B
27	+	V137-000001	GROMMET,FUEL	1		C
28		V805-000180	BOLT, TORX 5	4	TB-5*30 12.9	C
29		V420-001790	CUSHION	2		B
30		P021-005581	CAP ASY	1	BLACK	C
31	+	900720-00018	O-RING	1	P-18	
32	+	A365-000050	CONNECTOR,CAP	1		B
33		V470-000810	PIPE	1		C
34		P100-001900	STRAINER, OIL	1		B
35		130110-05261	PIPE 3* 6*185	1	3*6*185	C
36		V186-000510	JOINT,PIPE	1		C
37		P021-037920	FUEL CAP ASY	1		C
38	+	V581-000610	RING,O	1	P22	A
39	+	A365-000050	CONNECTOR,CAP	1		B
40		X503-009270	LABEL,MODEL	1	CS-310ES	D
41		890157-39131	LABEL, SWITCH	1		D
42		X524-001901	LABEL	1		D
43		890631-38131	LABEL, CAUTION	1		D

Class : Consumable class

A:Fast moving parts B:Semi-fast moving parts C:Slow moving parts D:Order only as needed

# MAGNETO





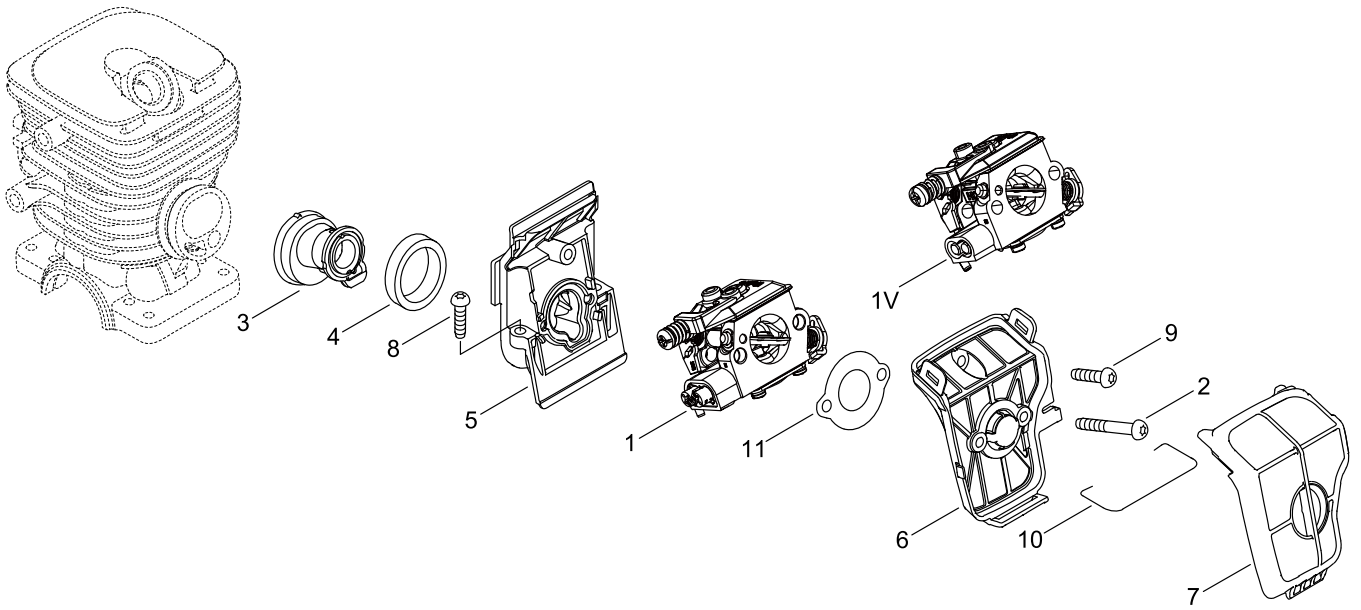
## MAGNETO

Key No.	LV (+)	Parts Number	Parts Description	Qty	Standard	Class
1		A409-000350	ROTOR, MAGNETO	1	WALBRO FW57	C
2		A411-000460	COIL, IGNITION	1	WALBRO MBU-35A	C
3		A427-000020	CAP, SPARK PLUG	1		C
4		A426-000020	TERMINAL, SPARKPLUG	1		C
5		100142-12330	KEY, WOODRUFF	1		C
6		900515-00008	NUT, FLANGE 8	1	8	
7		150117-16430	SPACER	2		C
8		V805-000210	BOLT, TORX 5	2	TB-5*20 12.9	C
9		A514-000020	PAWL	2		C
10		900603-00005	WASHER 5	2	5.5*12*0.8	
11		V203-000080	BOLT, 5	2	5*14	C
12		177247-04630	SPACER, RATCHET	2	5.2*8*2.1	C
13		177234-35430	SPRING, RETURN	2		B
14		A425-000000	SPARKPLUG	1	BPMR8Y	A

Class : Consumable class

A:Fast moving parts B:Semi-fast moving parts C:Slow moving parts D:Order only as needed

# AIR CLEANER, CARBURETOR



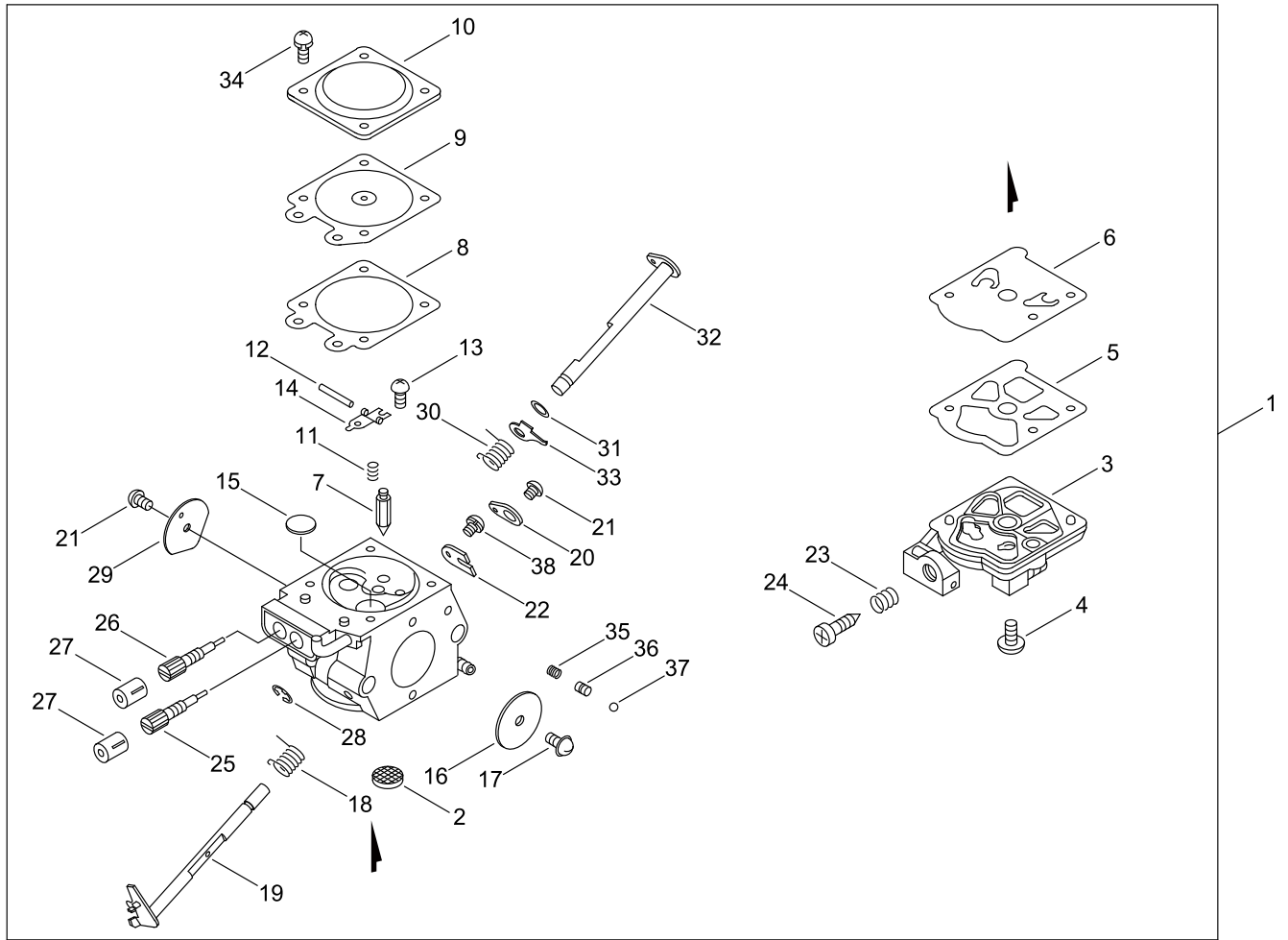
## AIR CLEANER, CARBURETOR

Key No.	LV (+)	Parts Number	Parts Description	Qty	Standard	Class
1		A021-001700	CARBURETOR,DIAPHRAGM	1	WT-946	B
1V		A021-005430	CARBURETOR,DIAPHRAGM	1		B
2		V805-000040	BOLT, TORX 5	2	TT-5*55 DG 10.9	C
3		A202-000071	BELLOWS, INTAKE	1		C
4		A206-000000	HOLDER, BELLOWS	1		C
5		A200-000353	INSULATOR, INTAKE	1		C
6		A225-000350	CASE,CLEANER	1		C
7		A226-000460	ELEMENT,AIR FILTER	1		A
8		V805-000010	BOLT, TORX 5	2	TT-5*20 DG 10.9	C
9		V805-000000	BOLT, TORX 5	1	TT-5*16 DG 10.9	C
10		V582-000050	RING,SNAP	1	D2	C
11		V103-000500	GASKET,INTAKE	1	ASK NO.4600	A

Class : Consumable class

A:Fast moving parts B:Semi-fast moving parts C:Slow moving parts D:Order only as needed

# CARBURETOR



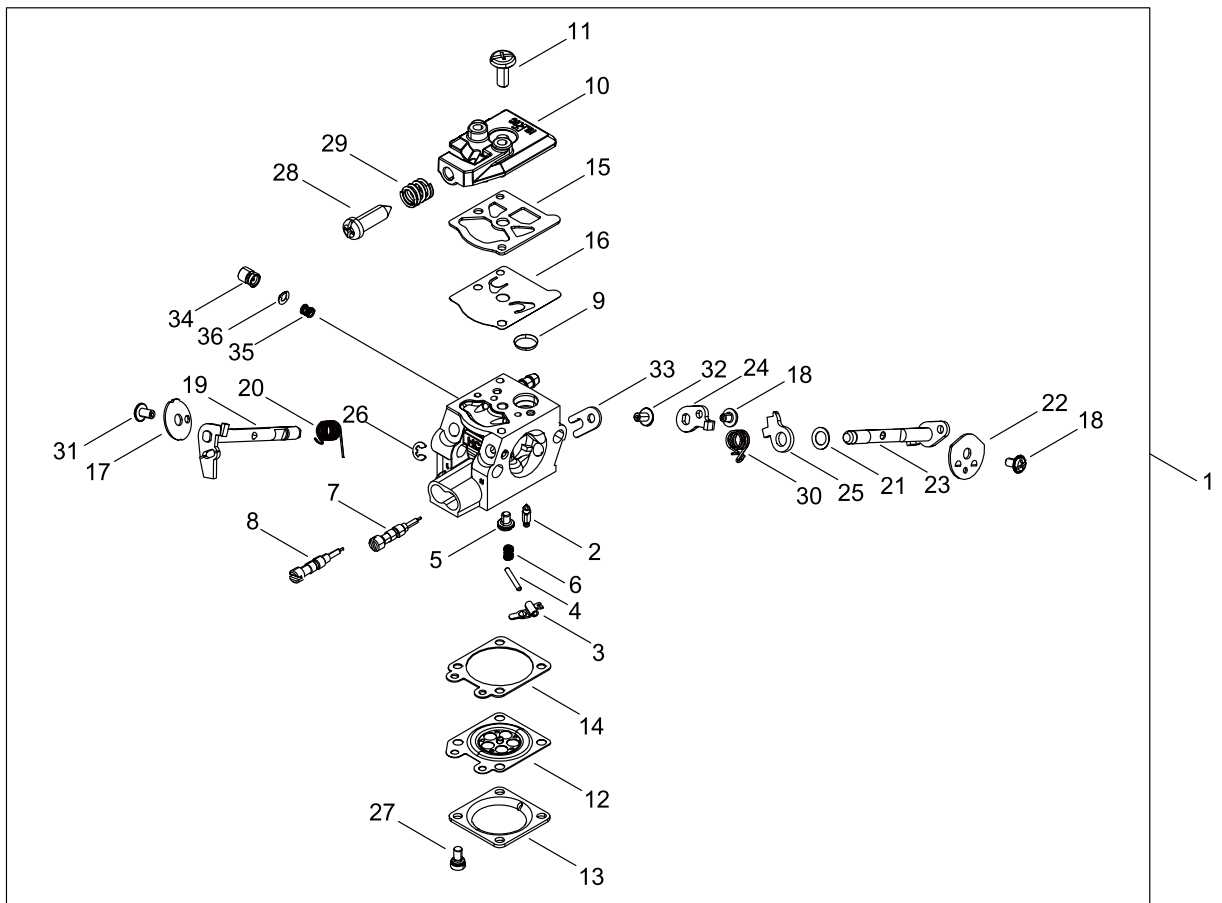
## CARBURETOR

Key No.	LV (+)	Parts Number	Parts Description	Qty	Standard	Class
1		A021-001700	CARBURETOR,DIAPHRAGM	1	WT-946	B
2	+	123126-10631	SCREEN, INLET	1		B
3	+	123124-09520	COVER, FUEL PUMP	1		D
4	+	123110-03930	SCREW, PUMP COVER	1		D
5	+	123125-15030	GASKET, FUEL PUMP	1		A
6	+	123112-15030	DIAPHRAGM, FUEL PUMP	1		A
7	+	123137-19830	VALVE, INLET NEEDLE	1		D
8	+	123140-03930	GASKET, M. DIAPHRAGM	1		A
9	+	P003-001850	DIAPHRAGM, METERING	1		A
10	+	123142-03930	COVER, M. DIAPHRAGM	1		D
11	+	123122-03660	SPRING, METER. LEVER	1		D
12	+	123138-03930	PIN, METERING LEVER	1		D
13	+	123139-03930	SCREW, M. LEVER PIN	1		D
14	+	123123-03930	LEVER, METERING	1		D
15	+	123146-10631	PLUG, WELCH	1		C
16	+	123116-05960	VALVE, THROTTLE	1		D
17	+	123114-05260	SCREW	1		D
18	+	123113-37530	SPRING, THROTTLE RTN	1		B
19	+	P003-002240	SHAFT ASY,THROTTLE	1		C
20	+	P003-001040	LEVER THROTTLE	1		D
21	+	123114-38830	SCREW	2		D
22	+	123127-03930	CLIP, THROTTLE SHAFT	1		C
23	+	123133-04260	SPRING, IDLE ADJUST	1		D
24	+	123134-04260	SCREW, IDLE ADJUST	1		D
25	+	123120-52131	NEEDLE, HIGH SPEED	1		D
26	+	123118-02261	NEEDLE	1		D
27	+	P003-000010	LIMITER CAP	2		B
28	+	123127-15030	RING	1		D
29	+	P003-002250	VALVE, CHOKE	1		D
30	+	P003-002260	SPRING	1		D
31	+	123149-26030	WASHER	1		D
32	+	P003-000150	CHOKE, SHAFT	1		
33	+	P003-001510	LEVER-FAST IDLE	1		D
34	+	123130-02960	SCREW	4		D
35	+	123186-09660	SPRING, START VALVE	1		D
36	+	123185-09660	PISTON ASSY	1		D
37	+	123136-09660	BALL	1		D
38	+	P003-005120	SCREW	1		D

Class : Consumable class

A:Fast moving parts B:Semi-fast moving parts C:Slow moving parts D:Order only as needed

# CARBURETOR 2



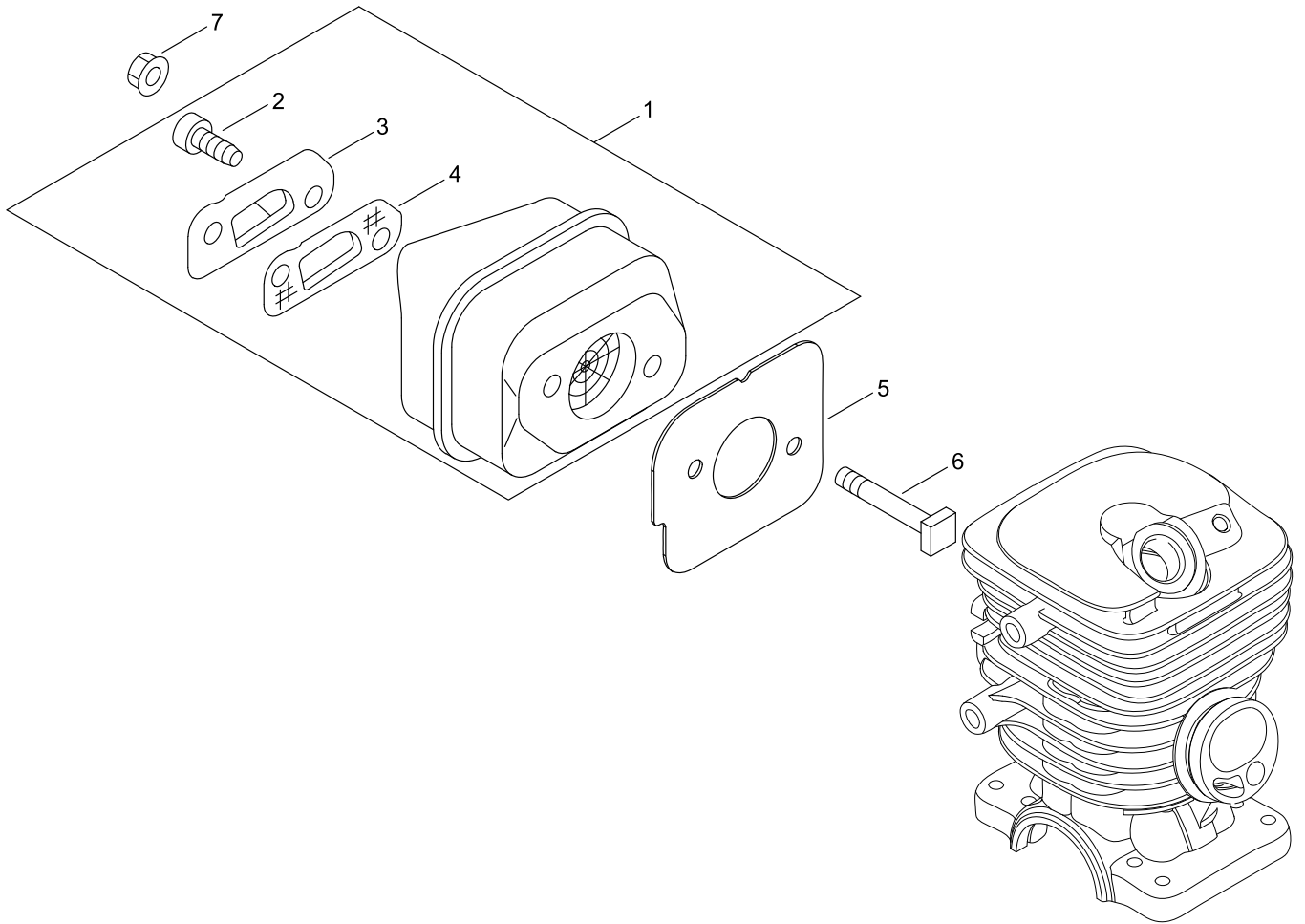
## CARBURETOR 2

Key No.	LV (+)	Parts Number	Parts Description	Qty	Standard	Class
1		A021-005340	CARBURETOR,DIAPHRAGM	1	GC-01-1	B
2	+	P006-000130	VALVE, INLET NEEDLE	1		D
3	+	P006-000790	LEVER,METERING	1		D
4	+	P006-000800	PIN, METERING LEVER	1		D
5	+	P006-000810	SCREW	1		D
6	+	P006-000820	SPRING, METER. LEVER	1		D
7	+	P006-000830	NEEDLE	1		D
8	+	P006-000840	NEEDLE	1		D
9	+	P006-000650	SCREEN,INLET	1		C
10	+	P006-000860	COVER,PUMP	1		D
11	+	P006-000870	SCREW	1	M4*10	D
12	+	P006-000680	DIAPHRAGM, METERING	1		A
13	+	P006-000880	COVER, METERING	1		D
14	+	P006-000890	GASKET, METERING	1		A
15	+	P006-000900	GASKET, PUMP	1		A
16	+	P006-000910	DIAPHRAGM PUMP	1		A
17	+	P006-000920	VALVE, THROTTLE	1		D
18	+	P006-000930	SCREW	2		D
19	+	P006-000940	SHAFT ASY THROTTLE	1		C
20	+	P006-000950	SPRING,THROTTLE RETU	1		D
21	+	P006-000960	WASHER	1		D
22	+	P006-000970	VALVE, CHOKE	1		D
23	+	P006-000980	SHAFT, CHOKE ASY	1		D
24	+	P006-000990	LEVER,THROTTLE	1		D
25	+	P022-059770	LEVER	1		D
26	+	P006-001000	E-RING	1		D
27	+	P006-001010	SCREW	4	M3*6	D
28	+	P006-001020	SCREW, IDLE ADJUST	1		D
29	+	P006-001030	SPRING, IDLE ADJUST	1		D
30	+	P006-001040	SPRING, CHOKE RETURN	1		D
31	+	P006-001050	SCREW	1		D
32	+	P006-001060	CLIP, THROTTLE SHAFT	1		D
33	+	P006-001070	SCREW	1		D
34	+	P006-001080	PISTON ASSY	1		C
35	+	P006-001090	SPRING, START VALVE	1		C
36	+	P006-001100	RING,O	1		C

Class : Consumable class

A:Fast moving parts B:Semi-fast moving parts C:Slow moving parts D:Order only as needed

# MUFFLER





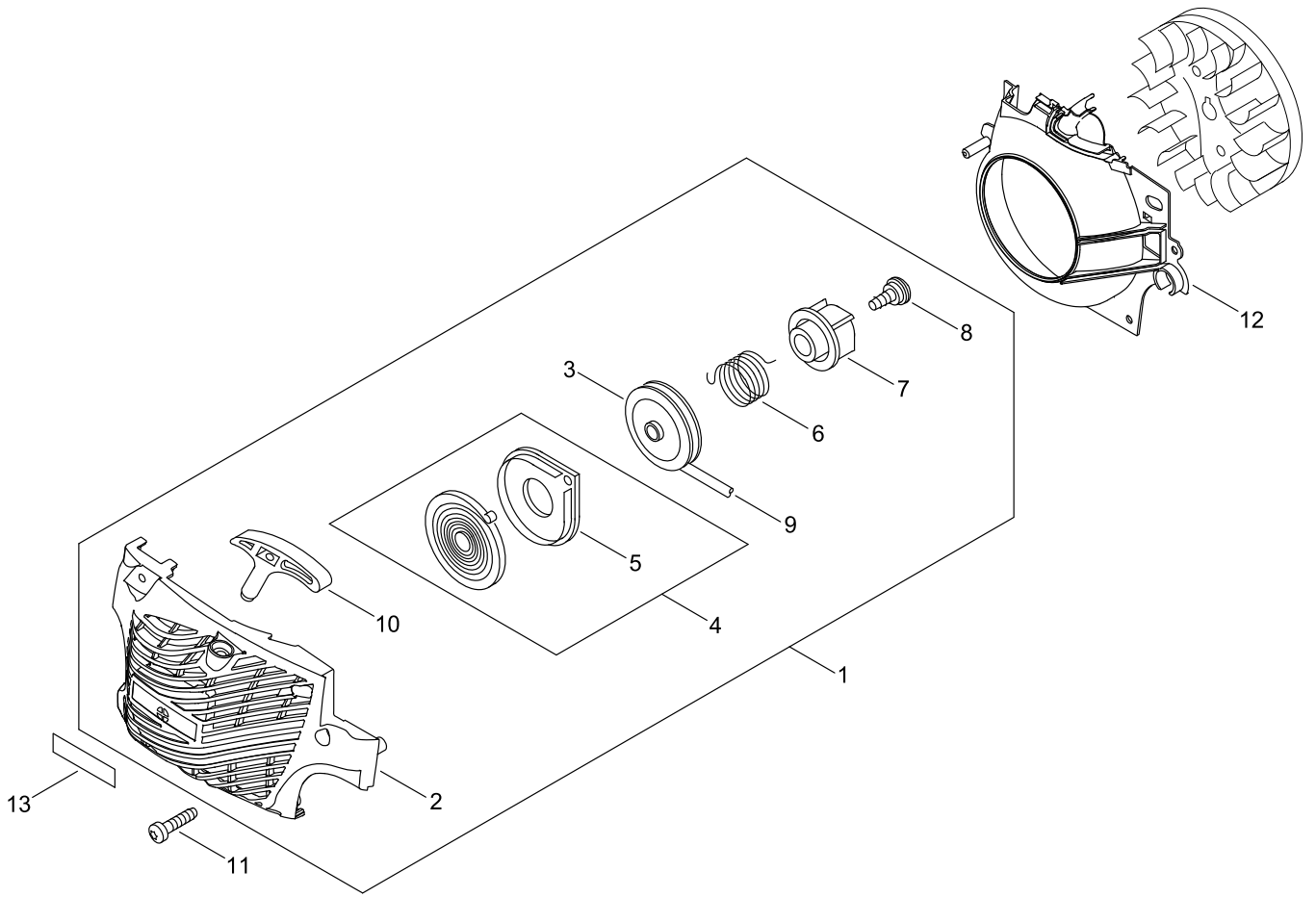
## MUFFLER

Key No.	LV (+)	Parts Number	Parts Description	Qty	Standard	Class
1		P100-004320	MUFFLER ASY	1		
2	+	V804-000030	BOLT, TORX 4	2	TB-4*8 10.9	C
3	+	A313-001120	GUIDE, EXHAUST	1	ID#1800	C
4	+	A310-000060	SCREEN, ARRESTOR	1		B
5		V104-000732	GASKET, EXHAUST	1		A
6		V203-000120	BOLT, 5	2	L=60	C
7		900516-00005	NUT, FLANGE	2	5	

Class : Consumable class

A:Fast moving parts B:Semi-fast moving parts C:Slow moving parts D:Order only as needed

# RECOIL STARTER



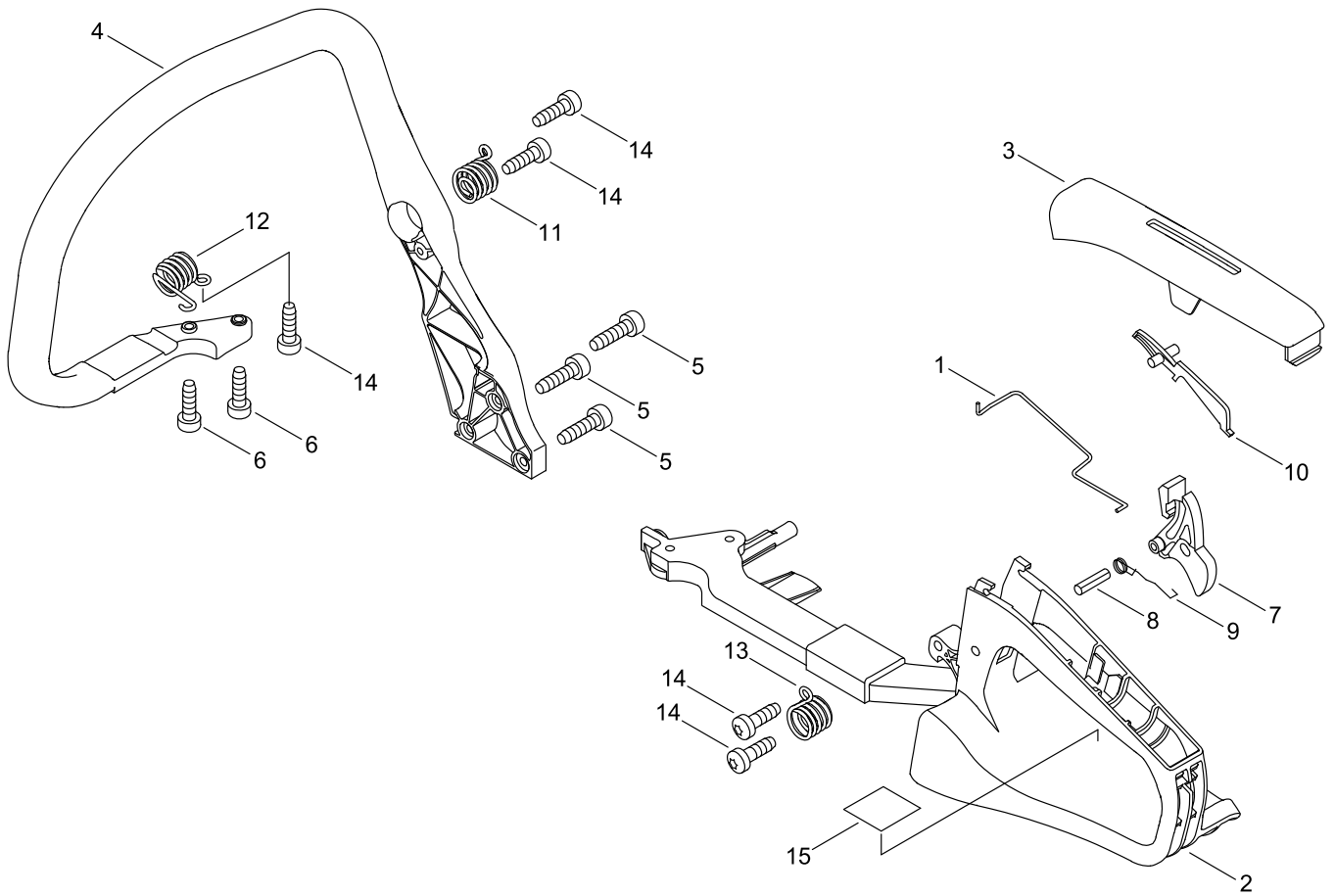
## RECOIL STARTER

Key No.	LV (+)	Parts Number	Parts Description	Qty	Standard	Class
1		A051-002741	STARTER,RECOIL ASY	1	ASSY EMC	B
2	+	P022-039030	STARTER CASE	1		C
3	+	P022-039040	DRUM, STARTER	1		C
4	+	P022-039050	SPRING KIT, REWIND	1		B
5	++	P022-033280	SPRING CASE	1		C
6	+	V452-001320	SPRING,TORSION	1		B
7	+	P022-039060	PLATE, CAM	1		C
8	+	177236-61830	SCREW	1		C
9	+	P022-035830	ROPE, STARTER	1		B
10	+	P022-035820	GRIP, STARTER	1		C
11		V805-000010	BOLT, TORX 5	4	TT-5*20 DG 10.9	C
12		A172-000830	COVER,FAN	1		C
13		X502-000670	LABEL,ECHO	1		D

Class : Consumable class

A:Fast moving parts B:Semi-fast moving parts C:Slow moving parts D:Order only as needed

# HANDLE



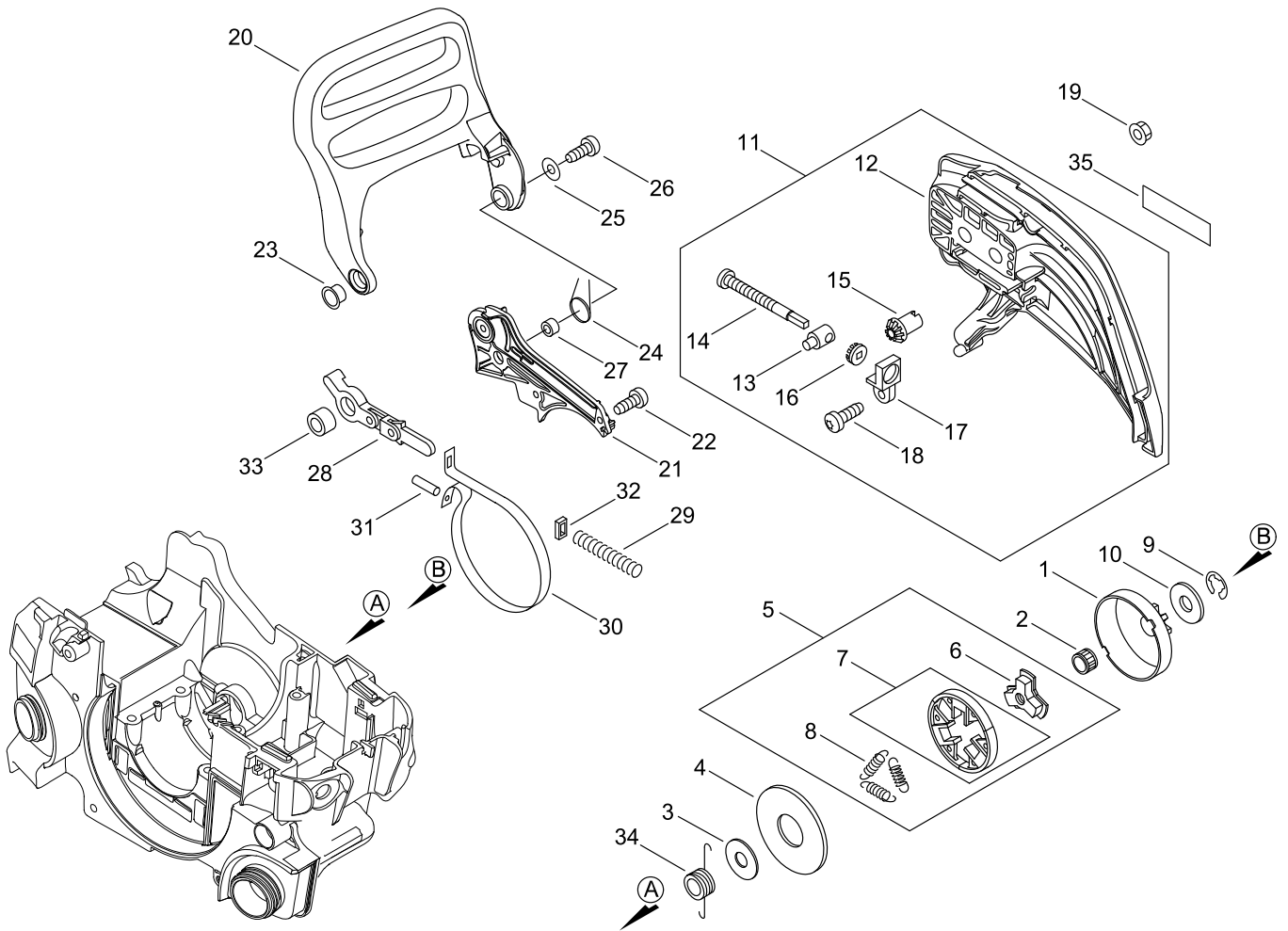
## HANDLE

Key No.	LV (+)	Parts Number	Parts Description	Qty	Standard	Class
1		C454-000160	ROD, THROTTLE	1		C
2		C410-000450	HANDLE, REAR	1		C
3		C411-000041	LID,HANDLE	1		C
4		C400-000541	HANDLE, FRONT	1		C
5		V805-000010	BOLT, TORX 5	3	TT-5*20 DG 10.9	C
6		V805-000000	BOLT, TORX 5	2	TT-5*16 DG 10.9	C
7		C450-000213	CONTROL, THROTTLE	1		C
8		900345-40025	PIN, SPRING	1	4*25	
9		V452-000260	SPRING,TORSION	1		B
10		C460-000072	LOCKOUT, THROTTLE	1		C
11		V450-000700	SPRING,COMPRESSION	1		B
12		V450-000710	SPRING,COMPRESSION	1		B
13		V450-000720	SPRING,COMPRESSION	1		B
14		V805-000000	BOLT, TORX 5	5	TT-5*16 DG 10.9	C
15		890345-39231	LABEL,CAUTION	1		D

Class : Consumable class

A:Fast moving parts B:Semi-fast moving parts C:Slow moving parts D:Order only as needed

# CHAIN BRAKE



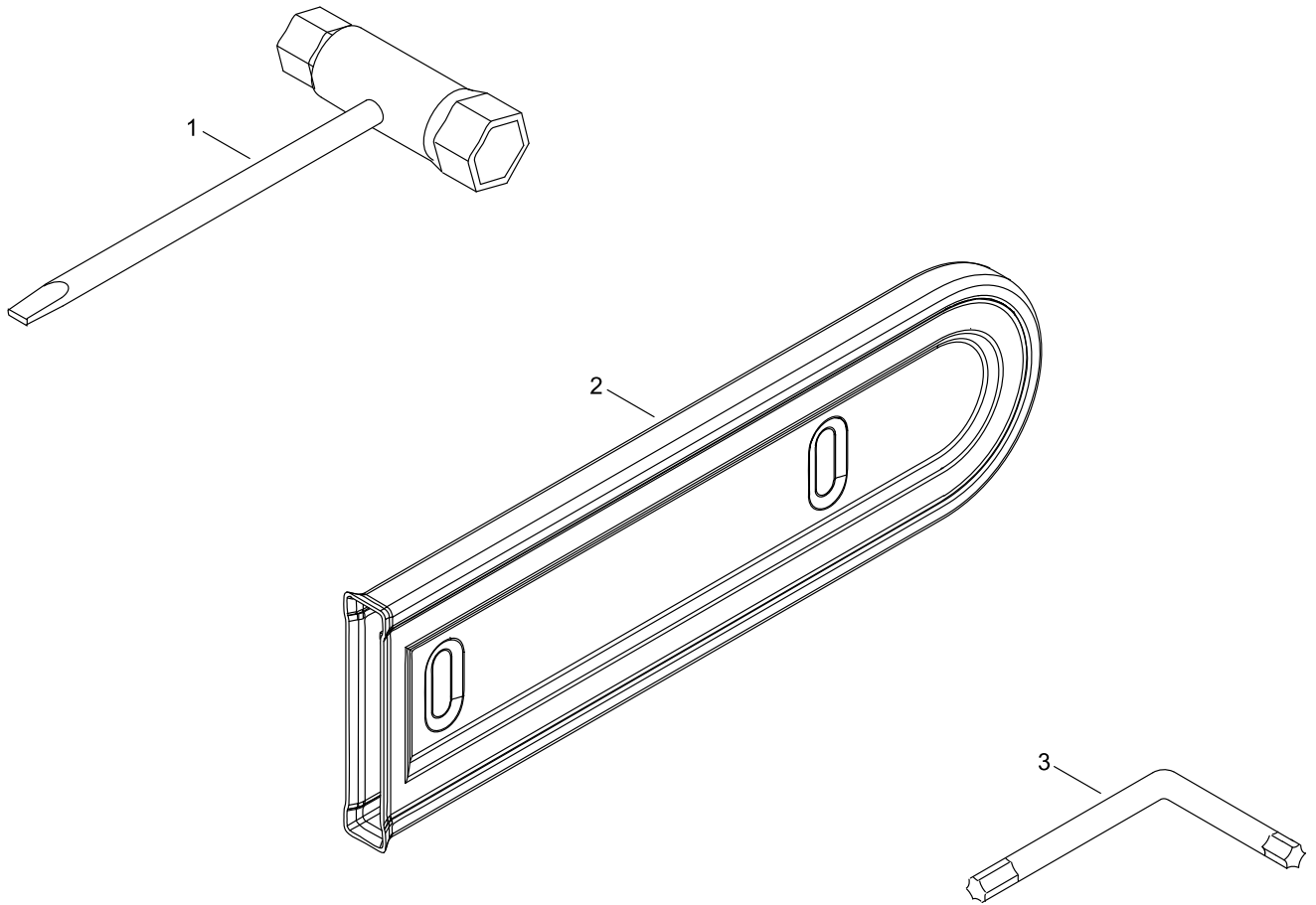
## CHAIN BRAKE

Key No.	LV (+)	Parts Number	Parts Description	Qty	Standard	Class
1		A556-000543	DRUM, CLUTCH	1	3/8	B
2		V553-000150	BEARING,NEEDLE 8	1		B
3		A551-000080	PLATE, CLUTCH	1		C
4		A551-000140	PLATE, CLUTCH	1		C
5		A056-000211	CLUTCH ASY	1		B
6	+	A552-000100	HUB, CLUTCH	1		B
7	+	P021-005811	CLUTCH SHOE SET	1		B
8	+	V451-000470	SPRING,TENSION	3		B
9		V583-000120	RING	1		C
10		100143-19830	WASHER	1	8.2*31*0.8	C
11		P021-015112	GUARD,SPROCKET KIT	1		C
12	+	C300-000402	GUARD, SPROCKET	1		C
13	+	C309-000030	TENSIONER,CHAIN	1		C
14	+	V203-000110	BOLT,5	1		C
15	+	V651-000001	GEAR,BEVEL	1		D
16	+	V651-000011	GEAR,BEVEL	1		D
17	+	V355-000140	COLLAR,8	1		C
18	+	V804-000000	BOLT, TORX 4	1	TT-4*12 DG 10.9	C
19		V265-000200	NUT	2		C
20		C320-000173	LEVER, BRAKE	1		C
21		C345-000271	COVER,BRAKE	1		C
22		V804-000000	BOLT, TORX 4	3	TT-4*12 DG 10.9	C
23		V356-000430	COLLAR,10	1		C
24		V452-000250	SPRING,TORSION	1		B
25		177214-03930	WASHER	1		C
26		V804-000020	BOLT, TORX 4	1	TT-4*20 DG 10.9	C
27		433116-35430	SPACER 8	1	8*12*9	C
28		C334-000100	CONNECTOR, BRAKE	1		C
29		V450-000070	SPRING,COMPRESSION	1		B
30		C328-000030	BAND,BRAKE	1		C
31		93050-30098	ROLLER	1	3*9.8	C
32		V376-000450	SPACER	1		C
33		433116-35430	SPACER 8	1	8*12*9	C
34		V652-000040	GEAR,WORM	1		B
35		X502-000340	LABEL,ECHO	1	ECHO(WHITE)	D

Class : Consumable class

A:Fast moving parts B:Semi-fast moving parts C:Slow moving parts D:Order only as needed

# ACCESSORIES







## ACCESSORIES

Key No.	LV (+)	Parts Number	Parts Description	Qty	Standard	Class
1		X602-000080	TOOL,WRENCH	1	13*19 L180	D
2		X490-000510	SCABBARD,CHAIN	1	350	D
3		X605-000170	TOOL,L WRENCH	1		D

Class : Consumable class

A:Fast moving parts B:Semi-fast moving parts C:Slow moving parts D:Order only as needed

## GUIDE BAR, CHAIN

Pitch ピッチ	Gauge ゲージ	Length 長さ	Guide Bar ガイドバー		Saw Chain ソーチェン		Hard Nose ハード ノーズ 	Sprocket Nose スプロケット ノーズ 
			Key No	Type 形式	Key No	Type 形式		
3/8 9.53 (inch) (mm)	0.050 1.27 (inch) (mm)	30 (cm)	A1	C30S91-47ML- EC	A2	91VXL-47E		●
3/8 9.53	0.050 1.27	35	B1	C35S91-53ML- EC	B2	91VXL-53E		●

## GUIDE BAR, CHAIN

Key No.	LV (+)	Parts Number	Parts Description	Qty	Standard	Class
A1		X122-000341	BAR,GUIDE 30	1	C30S91-47ML- EC	A
A2		X222-000130	CHAIN,SAW	1	91VXL-47E	A
B1		X123-000551	BAR,GUIDE 35	1	C35S91-53ML- EC	A
B2		X223-000080	CHAIN,SAW	1	91VXL-53E	A

Class : Consumable class

A:Fast moving parts B:Semi-fast moving parts C:Slow moving parts D:Order only as needed

# NUMERICAL PARTS INDEX

Part No	Part description	Page	Part No	Part description	Page	Part No	Part description	Page
100011-16131	RING, PISTON	2	177247-04630	SPACER, RATCHET	6	C300-000402	GUARD, SPROCKET	20
100013-15330	PIN, PISTON	2	433116-35430	SPACER 8	20	C309-000030	TENSIONER,CHAIN	20
100014-11520	SPACER, PISTON PIN	2	436114-13930	VALVE, CHECK	4	C320-000173	LEVER, BRAKE	20
100015-04630	CIRCLIP, PISTON PIN	2	890157-39131	LABEL, SWITCH	4	C328-000030	BAND,BRAKE	20
100142-12330	KEY, WOODRUFF	6	890345-39231	LABEL,CAUTION	18	C334-000100	CONNECTOR, BRAKE	20
100143-19830	WASHER	20	890631-38131	LABEL, CAUTION	4	C345-000271	COVER,BRAKE	20
100927-35830	PIPE	4	900345-40025	PIN, SPRING	18	C400-000541	HANDLE, FRONT	18
123110-03930	SCREW, PUMP COVER	10	900515-00008	NUT, FLANGE 8	6	C410-000450	HANDLE, REAR	18
123112-15030	DIAPHRAGM, FUEL PUMP	10	900516-00005	NUT, FLANGE	14	C411-000041	LID,HANDLE	18
123113-37530	SPRING, THROTTLE RTN	10	900603-00005	WASHER 5	6	C450-000213	CONTROL, THROTTLE	18
123114-05260	SCREW	10	900720-00018	O-RING	4	C454-000160	ROD, THROTTLE	18
123114-38830	SCREW	10	93050-30098	ROLLER	20	C460-000072	LOCKOUT, THROTTLE	18
123116-05960	VALVE, THROTTLE	10	94035-36201	BEARING, BALL	2	C463-000100	KNOB, LATCH	4
123118-02261	NEEDLE	10	A021-001700	CARBURETOR, DIAPHRAGM	8	J485-000200	HINGE	4
123120-52131	NEEDLE, HIGH SPEED	10	A021-001700	CARBURETOR, DIAPHRAGM	10	P003-000010	LIMITER CAP	10
123122-03660	SPRING, METER. LEVER	10	A021-005340	CARBURETOR, DIAPHRAGM	12	P003-000150	CHOKE, SHAFT	10
123123-03930	LEVER, METERING	10	A021-005430	CARBURETOR, DIAPHRAGM	8	P003-001040	LEVER THROTTLE	10
123124-09520	COVER, FUEL PUMP	10	A051-002741	STARTER,RECOIL ASY	16	P003-001510	LEVER-FAST IDLE	10
123125-15030	GASKET, FUEL PUMP	10	A056-000211	CLUTCH ASY	20	P003-001850	DIAPHRAGM, METERING	10
123126-10631	SCREEN, INLET	10	A172-000830	COVER,FAN	16	P003-002240	SHAFT ASY,THROTTLE	10
123127-03930	CLIP, THROTTLE SHAFT	10	A200-000353	INSULATOR, INTAKE	8	P003-002250	VALVE, CHOKE	10
123127-15030	RING	10	A202-000071	BELLOWS, INTAKE	8	P003-002260	SPRING	10
123130-02960	SCREW	10	A206-000000	HOLDER, BELLOWS	8	P003-005120	SCREW	10
123133-04260	SPRING, IDLE ADJUST	10	A225-000350	CASE,CLEANER	8	P006-000130	VALVE, INLET NEEDLE	12
123134-04260	SCREW, IDLE ADJUST	10	A226-000460	ELEMENT,AIR FILTER	8	P006-000650	SCREEN,INLET	12
123136-09660	BALL	10	A241-000150	KNOB, CHOKE	4	P006-000680	DIAPHRAGM, METERING	12
123137-19830	VALVE, INLET NEEDLE	10	A310-000060	SCREEN, ARRESTOR	14	P006-000790	LEVER,METERING	12
123138-03930	PIN, METERING LEVER	10	A313-001120	GUIDE, EXHAUST	14	P006-000800	PIN, METERING LEVER	12
123139-03930	SCREW, M. LEVER PIN	10	A356-000031	VALVE,CHECK	4	P006-000810	SCREW	12
123140-03930	GASKET, M. DIAPHRAGM	10	A365-000050	CONNECTOR,CAP	4	P006-000820	SPRING, METER. LEVER	12
123142-03930	COVER, M. DIAPHRAGM	10	A369-000420	STRAINER, FUEL	4	P006-000830	NEEDLE	12
123146-10631	PLUG, WELCH	10	A409-000350	ROTOR, MAGNETO	6	P006-000840	NEEDLE	12
123149-26030	WASHER	10	A411-000460	COIL, IGNITION	6	P006-000860	COVER,PUMP	12
123181-39130	PUMP, PRIMER	4	A425-000000	SPARKPLUG	6	P006-000870	SCREW	12
123185-09660	PISTON ASSY	10	A426-000020	TERMINAL,SPARKPLUG	6	P006-000880	COVER, METERING	12
123186-09660	SPRING, START VALVE	10	A427-000020	CAP,SPARK PLUG	6	P006-000890	GASKET, METERING	12
130110-05261	PIPE 3* 6*185	4	A440-001190	SWITCH, ON OFF	4	P006-000900	GASKET, PUMP	12
130338-32430	PLUG, COVER	4	A514-000020	PAWL	6	P006-000910	DIAPHRAGM PUMP	12
132115-01462	GROMMET	4	A551-000080	PLATE, CLUTCH	20	P006-000920	VALVE, THROTTLE	12
132115-44331	GROMMET, FUEL	4	A551-000140	PLATE, CLUTCH	20	P006-000930	SCREW	12
150117-16430	SPACER	6	A552-000100	HUB, CLUTCH	20	P006-000940	SHAFT ASY THROTTLE	12
177214-03930	WASHER	20	A556-000543	DRUM, CLUTCH	20	P006-000950	SPRING,THROTTLE RETU	12
177234-35430	SPRING, RETURN	6	C022-000190	AUTO-OILER ASSEMBLY	4	P006-000960	WASHER	12
177236-61830	SCREW	16				P006-000970	VALVE, CHOKE	12

# NUMERICAL PARTS INDEX

Part No	Part description	Page	Part No	Part description	Page	Part No	Part description	Page
P006-000980	SHAFT, CHOKE ASY	12	V356-000430	COLLAR,10	20	X490-000510	SCABBARD,CHAIN	22
P006-000990	LEVER,THROTTLE	12	V376-000450	SPACER	20	X502-000340	LABEL,ECHO	20
P006-001000	E-RING	12	V420-001790	CUSHION	4	X502-000670	LABEL,ECHO	16
P006-001010	SCREW	12	V450-000070	SPRING,COMPRESSION	20	X503-009270	LABEL,MODEL	4
P006-001020	SCREW, IDLE ADJUST	12	V450-000700	SPRING,COMPRESSION	18	X524-001901	LABEL	4
P006-001030	SPRING, IDLE ADJUST	12	V450-000710	SPRING,COMPRESSION	18	X602-000080	TOOL,WRENCH	22
P006-001040	SPRING, CHOKE RETURN	12	V450-000720	SPRING,COMPRESSION	18	X605-000170	TOOL,L WRENCH	22
P006-001050	SCREW	12	V451-000470	SPRING,TENSION	20			
P006-001060	CLIP, THROTTLE SHAFT	12	V452-000250	SPRING,TORSION	20			
P006-001070	SCREW	12	V452-000260	SPRING,TORSION	18			
P006-001080	PISTON ASSY	12	V452-001320	SPRING,TORSION	16			
P006-001090	SPRING, START VALVE	12	V470-000810	PIPE	4			
P006-001100	RING,O	12	V471-001561	PIPE	4			
P021-005581	CAP ASY	4	V471-002171	PIPE	4			
P021-005811	CLUTCH SHOE SET	20	V471-002191	PIPE	4			
P021-015050	CRANK CASE KIT	2	V485-001070	LEAD	4			
P021-015061	PISTON KIT	2	V485-001080	LEAD	4			
P021-015072	CRANKSHAFT,ASSY	2	V490-000400	CLIP	4			
P021-015112	GUARD,SPROCKET KIT	20	V490-001240	CLIP	4			
P021-037920	FUEL CAP ASY	4	V505-000011	SEAL,OIL 12	2			
P022-033280	SPRING CASE	16	V553-000060	BEARING,NEEDLE 8	2			
P022-035820	GRIP, STARTER	16	V553-000150	BEARING,NEEDLE 8	20			
P022-035830	ROPE, STARTER	16	V581-000610	RING,O	4			
P022-039030	STARTER CASE	16	V582-000050	RING,SNAP	8			
P022-039040	DRUM, STARTER	16	V583-000120	RING	20			
P022-039050	SPRING KIT, REWIND	16	V622-000070	PIN,STRAIGHT 4	4			
P022-039060	PLATE, CAM	16	V651-000001	GEAR,BEVEL	20			
P022-059770	LEVER	12	V651-000011	GEAR,BEVEL	20			
P100-001900	STRAINER, OIL	4	V652-000040	GEAR,WORM	20			
P100-004320	MUFFLER ASY	14	V804-000000	BOLT, TORX 4	20			
P100-007260	CYLINDER COVER ASY	4	V804-000020	BOLT, TORX 4	20			
P100-007270	ENGINE COVER ASY	4	V804-000030	BOLT, TORX 4	14			
V103-000500	GASKET,INTAKE	8	V805-000000	BOLT, TORX 5	8			
V104-000732	GASKET,EXHAUST	14	V805-000000	BOLT, TORX 5	18			
V130-000010	GROMMET,CHOKE	4	V805-000010	BOLT, TORX 5	8			
V137-000001	GROMMET,FUEL	4	V805-000010	BOLT, TORX 5	16			
V186-000510	JOINT,PIPE	4	V805-000010	BOLT, TORX 5	18			
V203-000080	BOLT,5	6	V805-000040	BOLT, TORX 5	8			
V203-000110	BOLT,5	20	V805-000180	BOLT, TORX 5	4			
V203-000120	BOLT,5	14	V805-000210	BOLT, TORX 5	6			
V225-000370	BOLT,STUD 8	4	V805-000220	BOLT, TORX 5	2			
V265-000200	NUT	20	X122-000341	BAR,GUIDE 30	24			
V341-000120	WASHER,SQUARE	4	X123-000551	BAR,GUIDE 35	24			
V355-000140	COLLAR,8	20	X222-000130	CHAIN,SAW	24			
			X223-000080	CHAIN,SAW	24			